

Catalog 2026

Asia Pharma Laboratory Products



www.asiapharma.af

info@asiapharma.af

Experience a healthy life

The background is a solid blue color. On the right side, there is a cluster of semi-transparent blue circles of various sizes, some overlapping each other. The circles are arranged in a way that they appear to be floating or scattered, with some larger circles and many smaller ones. The overall effect is a clean, modern, and health-oriented aesthetic.

CONTENTS

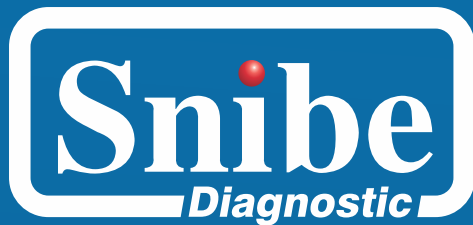
 Profile	5
 Snibe Diagnostic	6-15
 Alere™	16-20
 BIOER	21-24
 sense beautiful life vaxpert™	25-44
 Rayto	45-48
 JASMIC	49-65
 SPINREACT	66-76
 EDAN	77-80
 ACON®	81-84
 Myr	85-91

Asia Pharma Laboratory Products



Profile

Our story started in 2002. Our country enthused with hardworking, vigorous people that are determined to make with all of our customers to support the health of Afghanistan and provide for the development and advancement of Afghanistan. Asia Pharma Ltd. was founded during a time of challenge and hardship, when health services and access to good jobs were not available. Our company was committed to making a change and providing for the betterment of humankind. Asia Pharma Ltd. began business as a single branch, selling imported products. Today, the company has grown from on small store into a network of stores supported by our own factory with over 400 employees overall, manufacturing our own products within Afghanistan to complete the suite of services. We proudly stand for a good and healthy community and continue to work to together to make for a healthy Afghanistan. Today, we provide the tools and resources to benefit our community and our customers around the region.



 www.snibe.com

MAGLUMI® X3

Fully-auto Chemiluminescence Immunoassay (CLIA) System



Features & Benefits

- Small but powerful, the throughput is up to 200 tests/hour, and throughput per unit area is 294 T/h/m².
- Compatible with all **MAGLUMI®** reagents, one of the broadest automated CLIA test menus in the world (211 parameters).
- The latest intelligent washing technology and bidirectional temperature control measurement guarantee accurate and reliable results. The comprehensive advanced design of **MAGLUMI® X3** ensures excellent performance.
- Single reaction cup can avoid light pollution and increase cuvette utilization, its integrated packaging can avoid the stuck of the cuvette and destroying the cuvette wall.
- No-pause loading/unloading of reagents/samples/reaction cups without waiting or interrupting tests.

Top 10 Highlights of MAGLUMI® X3

- ① One of the highest space efficiency CLIA analyzers combines one of the broadest automated CLIA test menus.
- ② The throughput is up to 200 tests/hour (Throughput per unit area is 294 T/h/m²). No worry about the lack of laboratory space.
- ③ MAGLUMI® reagent kits (211 parameters) and consumables are compatible with MAGLUMI® X3.
- ④ The comprehensive advanced design of MAGLUMI® X3 ensures excellent performance.
- ⑤ Single reaction cup can avoid light pollution and increase cuvette utilization, its integrated packaging can avoid the stuck of the cuvette and destroying the cuvette wall.
- ⑥ No-pause loading/unloading of reagents/samples/reaction cups without waiting or interrupting tests.
- ⑦ Pipetting detection technologies include liquid level, clot, and crash detection can ensure accurate and normal pipetting.
- ⑧ The latest intelligent washing technology and bidirectional temperature control measurement guarantee accurate and reliable results.
- ⑨ Intelligent UI interface, user-friendly, easy, and convenient operation.
- ⑩ Intuitive indicator light make users no need to check reagents and consumables frequently.

MAGLUMI® X3 Reagent and Consumables



Reagent Kit



Reaction Cup



Starter 1+2



Light Check



Wash Concentrate



System Tubing Cleaning Solution

MAGLUMI™ 2000 Plus

Chemiluminescence Immunoassay (CLIA) System



MAGLUMI™ 2000 Plus

Chemiluminescence Immunoassay (CLIA) System

Technical Specifications	
Reagent Feature	<ul style="list-style-type: none"> ● Flash chemiluminescence label –ABEI, with high sensitivity and long stability ● Magnetic microbeads separation, fast and efficient
Main Features	<ul style="list-style-type: none"> ● Throughput: up to 180 tests/hour ● 24 hours ready-to-use ● Time to first result: 17 minutes
Modes of Operation	<ul style="list-style-type: none"> ● Random, Batch and STAT
Sample Loading	<ul style="list-style-type: none"> ● Up to 144 samples tubes ● Continuous loading, STAT available ● Barcode reader recognition or analyzer auto numbered ● LIS connection, auto read sample info ● Refrigerated sample area with independent power supply
Reagent Loading	<ul style="list-style-type: none"> ● 25 reagents on board ● Continuous loading ● RFID reading all info of reagent ● Refrigerated reagent area with independent power supply
Reagent Integral	<ul style="list-style-type: none"> ● Ready-to-use, no pretreatment required ● Including calibrators ● RFID tag storing all info of reagent ● RFID tag with built-in master curve ● 2-point calibration to adjust master curve ● Calibration stability: Max 4 weeks
Other Features	<ul style="list-style-type: none"> ● Clot detection ● Liquid level detection ● Auto and optional ratio for high sample dilution ● Constant 37°C incubation
Operation System	<ul style="list-style-type: none"> ● Windows 7 ● Dell compatible (Dual-core CPU) ● Color touch screen
Interconnection	<ul style="list-style-type: none"> ● Bi-communication with LIS via ASTM protocol
Dimensions Weight	<ul style="list-style-type: none"> ● Input: AC 110-230V, 50/60HZ ● Dimension and weight: 144 x 76 x 152cm 228kg

MAGLUMI[®] 800

Chemiluminescence Immunoassay (CLIA) System



MAGLUMI[®] 800

Chemiluminescence Immunoassay (CLIA) System

Technical Specifications

- Reagent Feature**
- Flash chemiluminescence label-ABEI, with high sensitivity and long stability
 - Nano magnetic microbeads separation, fast and efficient

- Main Features**
- Throughput: up to 180 tests/hour
 - 24 hours ready to use
 - Time to first result: 17 minutes

- Modes of Operation**
- Random, Batch and STAT

- Sample Loading**
- Up to 40 sample tubes
 - Continuous loading, STAT available
 - Barcode reader recognition or analyzer automatic numbered
 - LIS connection, automatic read sample information
 - Refrigerated sample area with independent power supply

- Reagent Loading**
- 9 reagents on board
 - Continuous loading
 - RFID reading all info of reagent
 - Refrigerated reagent area

- Reagent Integral**
- Ready-to-use, no pretreatment required
 - Including calibrators
 - RFID tag storing all info of reagent
 - RFID tag with built-in master curve
 - 2-point calibration to adjust master curve
 - Calibration stability: Max 4 weeks

- Other Features**
- Clot detection
 - Liquid level detection
 - Automatic and optional ratio for high sample dilution
 - Constant 36.8°C ± 0.5°C incubation

- Operation System**
- Windows 7
 - DELL compatible (Dual-core CPU)
 - Color touch screen

- Interconnection**
- Bidirectional LIS connection by TCP/IP and COM

- Dimensions Weight**
- Input: AC 110/230 Vac, 50/60 Hz, Max 630W
 - Dimension and Weight: 102*72*56cm 73kg

Operation Software



Comprehensive software

- User-friendly Interface
- Real-time status monitoring for each test
- Monitoring reagent and consumable status
- Intelligent alarm function



Maintenance Guide

- Daily, weekly and monthly maintenance guide for analytical unit
- Ensure performance reliability



Quality control

- Westgard rules and Levey-Jennings chart for both internal and external quality control



Test Summary Function

- Test summary including system test, calibration, QC, statistics of samples, valid tests and rerun tests
- Search and review test information conveniently



Pre or post defined dilution Function

- Pre or post defined dilution flexibly if high concentration is met



Connect to LIS (bidirection)

- Bidirection, Lis can connect by online and ASTM



MAGLUMI® CLIA Test Menu with 256 Parameters

Thyroid

TSH (3rd Generation) ^{FDA}
 Total T4 ^{FDA}
 Total T3 ^{FDA}
 Free T4 ^{FDA}
 Free T3 ^{FDA}
 Tg (Thyroglobulin)
 TGA (Anti-Tg)
 Anti-TPO
 TRAb
 TMA
 Rev T3
 T-Uptake

Fertility

Testosterone
 free Testosterone
 DHEA-S
 Progesterone
 Unconjugated Estriol
 17 v-OH Progesterone
 AMH
 SHBG
 Androstenedione
 PIGF
 sFlt-1
 *Inhibin A
 *Inhibin B

Tumor Markers

AFP	CA 72-4
CEA	NSE
Total PSA	S-100
free PSA	SCCA
CA 125	TPA-snibe
CA 15-3	ProGRP
CA 19-9	HE4
PAP	HER-2
CA 50	PIVKA-II
CA 242	*AFP-L3%
CYFRA 21-1	

STAE-X™

*hs-cTnl **STAE-X™** *D-Dimer **STAE-X™**
 *NT-proBNP **STAE-X™** *PCT **STAE-X™**
 *Myoglobin **STAE-X™** *CRP **STAE-X™**

Infectious Disease

Hepatitis

HBsAg
 Anti-HBs
 HBeAg
 Anti-HBe
 Anti-HBc
 Anti-HBc IgM
 Anti-HCV
 Anti-HAV
 HAV IgM
 *HBV Pre-S1 Ag
 *HEV IgG
 *HEV IgM
 *HDV IgG
 *HDV IgM
 *Anti-HDV

Respiratory

2019-nCoV IgG
 2019-nCoV IgM
 SARS-CoV-2 S-RBD IgG
 SARS-CoV-2 Neutralizing Antibody
 SARS-CoV-2 Ag

Mycoplasma pneumoniae IgG
Mycoplasma pneumoniae IgM
Chlamydia pneumoniae IgG
Chlamydia pneumoniae IgM
 *Respiratory Syncytial Virus IgM
 *Coxsackievirus B IgM
 *Adenovirus IgM
 *Influenza A Virus IgM
 *Influenza B Virus IgM
 *Legionella pneumophila IgM
 *Human Parainfluenza Virus IgM

Bone Metabolism

Calcitonin
 Osteocalcin
 25-OH Vitamin D ^{FDA}
 Intact PTH
 (2-CTx
 total P1NP
 *PTH (1-84)
 *BAP

Autoimmune

Connective Tissue Disease

ANA Screen
 ENA Screen
 Anti-dsDNA IgG
 Anti-Sm IgG
 Anti-Rib-P IgG
 Anti-SS-B IgG
 Anti-SS-A/Ro IgG (Ro60)
 Anti-Jo-1 IgG
 Anti-Scl-70 IgG
 Anti-Centromeres IgG

Autoimmune

Connective Tissue Disease

Anti-Histones IgG
 Anti-Sm/RNP IgG
 Anti-Ro-52 IgG
 *Anti-PM-Scl IgG
 *Anti-Nucleosome IgG

Rheumatoid Arthritis

Anti-CCP
 *RF IgM
 *RF IgG
 *RF IgA
 *RF Screen
Celiac Disease
 Anti-tTG IgA
 Anti-tTG IgG
 DGP IgA
 DGP IgG

Prenatal Screening

AFP (Prenatal Screening)
 free (2-HCG
 PAPP-A
 Unconjugated Estriol
 *Inhibin A

TORCH

Toxo IgG
 Toxo IgM
 Rubella IgG
 Rubella IgM
 CMV IgG
 CMV IgM
 HSV-1/2 IgG
 HSV-1/2 IgM
 HSV-1 IgG
 HSV-2 IgG
 HSV-1 IgM
 HSV-2 IgM
 *Toxo IgG Avidity
 *CMV IgG Avidity

TORCH

*Toxo IgG Avidity
 *CMV IgG Avidity
 *Parvovirus B19 IgG
 *Parvovirus B19 IgM

Anemia

Vitamin B12
 Ferritin
 Folate (FA)
 EPO
 RBC Folate
 *Anti-Intrinsic Factor
 *Active B12

Immunoglobulins

IgM
 IgA
 IgE
 IgG

Neurology

NSE
 S-100
 *(2-Amyloid (1-40) CSF
 *(2-Amyloid (1-42) CSF
 *Phospho-Tau (181P) CSF
 *Total-Tau CSF

Inflammation Monitoring

CRP
 PCT (Procalcitonin)
 IL-6 (Interleukin 6)
 SAA (Serum Amyloid A)
 TNF- v
 *VEGF
 *PCT **STAE-X™**
 *CRP **STAE-X™**

Inflammation Monitoring

CRP
 PCT (Procalcitonin)
 IL-6 (Interleukin 6)
 SAA (Serum Amyloid A)
 TNF- v
 *VEGF
 *PCT **STAE-X™**
 *CRP **STAE-X™**

Hepatic Fibrosis

Hyaluronic Acid (HA)
 PIIIP N-P
 C IV
 Laminin
 Cholyglycine
 GP73

MAGLUMI® CLIA Test Menu with 256 Parameters

Cardiac

- CK-MB
- Troponin I
- Myoglobin
- hs-cTnI
- hs-CRP
- H-FABP
- NT-proBNP
- BNP
- D-Dimer
- Lp-PLA2
- MPO
- HCY (Homocysteine)
- *sST2
- *hs-cTnI *STALEX™*
- *NT-proBNP *STALEX™*
- *Myoglobin *STALEX™*
- *D-Dimer *STALEX™*

Infectious Disease

Others

- HIV Ab/Ag Combi
- Syphilis
- Chagas
- HTLV I+II
- H. pylori* IgG
- H. pylori* IgA
- H. pylori* IgM
- **H. pylori* Ag
- Dengue Virus IgG
- Dengue Virus NS1
- *Dengue Virus IgM
- Monkeypox Virus Ag
- *TB-IGRAs
- *Zika Virus IgG
- *Zika Virus IgM
- *Zika Virus NS1
- **Chlamydia trachomatis* IgA
- **Chlamydia trachomatis* IgG

Autoimmune

Autoimmune Liver Disease

AMA-M2 IgG

Endocrinology

- Anti-TPO
- TGA (Anti-Tg)
- TRAb
- TMA
- Anti-GAD (GAD65)
- Anti-IA2
- ICA
- IAA (Anti Insulin)
- *Anti-ZnT8

- *Anti-PR3 IgG
- *Anti-GBM IgG

Vasculitis

- Anti-MPO IgG
- *Anti-PR3 IgG
- *Anti-GBM IgG

Antiphospholipid Syndrome

- Anti-Cardiolipin IgG
- Anti-Cardiolipin IgM
- *Anti-Cardiolipin IgA
- *Anti-Cardiolipin
- Anti-(22-Glycoprotein I IgG
- Anti-(22-Glycoprotein I IgM
- *Anti-(22-Glycoprotein I IgA
- *Anti-(22-Glycoprotein I

Drug Monitoring

- Digoxin
- CSA (Cyclosporine A)
- FK 506 (Tacrolimus)
- *Sirolimus
- *Everolimus
- *Mycophenolic Acid

Hypertension

- Direct Renin
- Aldosterone
- Angiotensin I
- Angiotensin II
- Cortisol
- ACTH

Metabolism

- Pepsinogen I
- Pepsinogen II
- Gastrin-17
- GH (hGH)
- IGF-I
- IGFBP-3

Kidney Function

- (2₂)Microglobulin
- Albumin
- *NGAL

EBV

- EBV EA IgG
- EBV EA IgA
- EBV VCA IgG
- EBV VCA IgM
- EBV VCA IgA
- EBV NA IgG
- EBV NA IgA

Coagulation Markers

- D-Dimer
- TAT
- TM
- PIC
- tPAIC
- *FDP

Veterinary Testing

- cTSH
- cTT4
- cFT4
- *cCortisol





 www.alere.com

Alere™ **h** 380

3-part Differential Hematology Analyser

.. when
the speed matt



Alere™ **h** 380

Specifications

Principle

- Reliable Impedance method for cell counting
- Photometric Cyanide-free Hemoglobin estimation

Performance

	Linearity		Precision		Units
	Range Low	Range Normal	SD	CV	
WBC	0	75	<0.20	<3.4%	10 ³ /µl
RBC	0	8	<0.13	<2.0%	10 ⁹ /µl
HGB	0	25	<0.22	<2.4%	g/dl
PLT	0	1000	<27	<7%	10 ³ /µl
GRA%	0%	100%	<3.50	-	%
LYM%	0%	100%	<3.10	-	%
MID%	0%	40%	<2.00	-	%

Printout

- Built in thermal printer module, provides full report with Histograms
- Optional printer interface available through USB

Display

- 320X240 dots, high contrast, backlit color, LCD

Data Storage

- 10,000 Patient Reports with Histograms
- Data backup through USB mass storage device
- Host computer interface USB & Port

Weight

- 12 Kgs

Dimensions

- 32cm x 26 cm x 36.5 cm

Through put

- 80 sample per.hr.

Sample Volume

- Whole Blood Mode - 25 ul
- Pre diluted mode - 50 ul

Parameters

- WBC, LYM, MID, GRA
- LYM%, MID%, GRA%
- RBC, HGB, HCT & RDW _{CV/SD}
- MCV, MCH, MCHC
- PLT, PCT, MPV, PDW _{CV/SD}

Aperture Diameter

- 70 um (RBC/PLT)
- 100 um (WBC)

Reagents

- Alere Dil Diff
- Alere Lyse Diff with Hardware key
- Alere Cleaner

Quality Control

- 3 Level QC available with capabilities with of online LJ
- Open vial Stability of 14 days



Alere™ **h** 560

5-part Differential Hematology Analyser

Specifications

Principle:

- Volumetric Impedance method for Cell counting
- Photometric Cyanide free hemoglobin estimation
- Laser light scatter technology for 5-part WBC differential

Display:

- 800 x 600 color graphic LCD, portrait layout

Data Storage:

- 100,000 records including flags, scatter- and histograms



Designed differently,
to create a difference.

Alere™ 560

Performance:

Parameters	Linearity		Precision		Accuracy		Units
	Range Low	Range Normal	SD	CV	Absolute	Percent	
WBC	0	100	<0.20	<3.4%	<0.30	<6.00%	103/ μ L
NEU%	0	100	<3.50		<3.00	<10.00%	%
LYM%	0	100	<3.10		<3.00	<10.00%	%
MON%	0	40	<2.00		<3.00	<10.00%	%
EOS%	0	30	<2.00		<1.50	<10.00%	%
BAS%	0	5	<2.00		<0.5	<40.00%	%
RBC	0	8	<0.13	<2.0%	<0.15	<6.00%	106/ μ L
HGB	1	25	<0.22	<2.4%	<0.30	<6.00%	g/dL
MCV	50	120	<1.20	<2.0%	<1.00	<6.00%	fL
RDWcv	8	20	<0.45	<3.0%	<0.50	<6.00%	%
PLT	0	2000	<27	<7.0%	<15.00	<8.00%	103/ μ L
MPV	5	20	<0.50	<0.50%	<0.80	<10.00%	fL

Throughput:

- 60 tests/hour

Parameters:

- WBC, LYM, MON, NEU, EOS, BAS, LYM%, MON%, NEU%, EOS%, BAS%, RBC, HCT, MCV, RDW(sd/cv), HGB, MCH, MCHC, PLT, PCT, MPV, PDW(sd/cv)

Flagging:

- Pathological (diagnostic) flags
- Lab limits (normal ranges)
- Reagents alert
- Instrument alerts, internal puffer for reagents

Sample volume:

- Closed and Open-mode: 110l

Aperture diameter:

- WBC: 80m, RBC/PLT: 70 m

Aperture length:

- WBC: 80m, RBC/PLT: 70 m

Reagents:

- Alere™ Dil 5P (20 liter)
- Alere™ Lyse 5P (5L)
- Alere™ Diff 5P (1L)
- Alere™ Hypoclean (100ml) (Emergency cleaner)

Quality control:

- 3 level QC available with an open vial stability of 14 days.
- On board tools like L-J carts and X bar available for monitoring.

Weight & Dimensions:

- 35 Kg (77 lb)



BIOER

 www.bioer.com

Line Gene 9600 Plus

Real-Time PCR Detection System



Line Gene 9600 Plus

Real-Time PCR Detection System

Product Name	LineeGene9600 Plus Fluorescence Quantitative PCR Detection System			
Model	FQD-96A			
Sample Capacity	96-Well PCR plate, 12×8-strip, 96×0.2ml(Bottom Transparent)			
Dynamics Range	1-10 ¹⁰ Copies			
Excitation Wavelength	300-800nm			
Emission Wavelength	500-800nm			
Detected fluorescence	F1:FAM.SYBR Green I; F2:VIC,HEX,TET,JOE CY3,NED,TAMRA.	F1:FAM.SYBR Green I; F2:VIC,HEX,TET,JOE, CY3,NED,TAMRA. F3:ROX,TEXAS-RED,	F1:FAM.SYBR Green I; F2:VIC,HEX,TET,JOE, CY3,NED,TAMRA. F3:ROX,TEXAS-RED, F4:CY5;	F1:FAM.SYBR Green I; F2:VIC,HEX,TET,JOE, CY3,NED,TAMRA. F3:ROX,TEXAS-RED, F4:CY5; F5:CY5.5;
Block Temp. Range	4-105 C (Minimum Increment: 0.1° C) SOAK Low Temp,Conservation Function			
Heating Cooling Rate	4.0 C/s(max)			
Temp. Control Accuracy	≤±0.1° C			
Temp. Fluctuation	≤±0.1° C			
Temp. Uniformity	≤+0.3° C			
Temp. Control Mode	BLOCK/Tube Simulation Mode (Automatic Control Based On Sample Volume)			
Sample Volume Range	5-100μL			
Gradient Temp. Range	1-36° C			
Hot-lid Temp. Range	30-110 C(Adjustable, Default 105 C),Automatic Hot-lid			
Fluorescence Detection Repeatability	5%			
Scan Mode	Entire Plate or Designated Line			
Program	Max 20 Segments for Each Program, Max 99 Cycles			
Operation Mode	Continuous			
Scan Period	5,5s			
Feature Function	Absolute Quantification, Relative Quantification, SNPAnalysis; Data Automatic analysis, Melting Curve Genotyping; Gradient: HRM; Multi-channel Crosstalk Correction; Background Correction;Automatic Gain; Customized Parameters;			
Operation System	Microsoft: Windows7/windows 8.1 Software: Excel2000/2002/2003/2007/2012			
PC Configuration	Memory: 2G Hard Disk: 32GB			
Power Supply	100-240V-50/60Hz 600W			
Dimension(L×W×H)	410mm 386mm 352mm			
Socket	USB Adapter, RS232 Adapter, Bluetooth Adapter			
Authentiation	Ferrotec Peltier/CE (EMC & LVD)/IVD/RoHS2/PICC product quality liability insurance			



Nucleic Acid Purification System

GenePure Pro



High efficient purification

With pre-packaged reagents, the experiment can be completed by adding samples manually in one step. Nucleic acid extraction from 32 samples can be completed in 8 minutes.



Lower energy consumption

The newly upgraded machine uses less energy and is more environmentally friendly.



Widely applications

It is suitable for the extraction of various samples including animal and plant tissues, bacteria, fungi, viruses, blood, soil, feces and so on.



Lighter and powerful

Lighter weight makes installation more convenient and more suitable for use in various laboratories or mobile PCR laboratories.



Easy to use

User-friendly operation software, preset reagent templates can simplify the initial setting steps of the experiment.



Safety

Disposable extraction tube and UV lamp are used to avoid aerosol pollution of samples from different batches and reduce operational risks.

sense beautiful life ™
vaxpert

 www.vaxpert.net

VX-b400

Auto Chemistry Analyzer

280 Tests/Hour, Double Reagent



- Constant speed 280 tests/ hour
- Independent probe
- Independent stirrer
- Reagent tray contains 80 reagent positions
- Sample tray contains 40 sample positions
- The reaction tray contains 44 UV Plastic reaction cuvettes
- 4-stage, 2 times automatic washing system

VX-b400

Auto Chemistry Analyzer

Multifunctional precision sampling probe

- External & internal mirror polish, external & internal probe washing
- Dedicated sampling probe equipped with sensitive liquid sensor, timely feedback of reagent & sample residuals
- Collision protection, automatic probe depth adjusting



Excellent mixer design

- Teflon coating mixer. No water dropping (reducing carry-over)
- Excellent mixing effect with standard mixing procedure



High precision ceramic syringe

- Permanent ceramic piston
- Accurate dispensing as low as 0.1 μl



Reagent & sample tray

- 80 reagent positions · 40 sample positions
- Non-stop cooling system with peltier pad inside, 24 hours 2°C-14°C
- Bar code reader(optional)



VX-b400

Auto Chemistry Analyzer

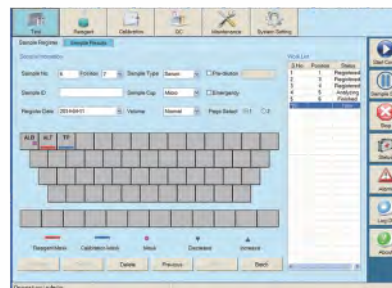
Reaction tray

- 44 reaction cuvettes
- Reaction volume as low as 150 μ l
- Stable & accurate temperature($37\pm 0.1^{\circ}\text{C}$) for reaction



Advanced operating system

- User friendly software interface simple, easy-to-operation
- Sample automatic dilution(decrease, increase, normal)
- Reaction result automatic checking and warning, calibration result
- automatic checking, warning alarm log
- Linear & nonlinear calibration, Multi-points calibration up to 8 points
- Quality control apply to westgard, L-T plot, cumulative



VX-h360

3-Part Auto Hematology Analyzer



■ Minimum volume 9 μ l whole blood



■ Large storage capacity, 500,000 results



■ Throughput up to 60 samples/hour with whole blood mode



■ 10.4 inch color display screen with touch panel



VX-h360

Auto Chemistry Analyzer

Parameters

Throughput	60 samples/hour	Display type	10.4 inch color display screen with touch panel
Detection channel	Double -channel for counting	Storage	500,000 sample results, including histogram and patient information
Sample volume	Minimum volume 9 μ l whole blood	Input/Output	4 USB ports and Bi-directional LIS connection, support USB keyboard, mouse, USB disk and USB printer
Counting modes	Whole blood mode, pre-diluted mode	Operating environment	Temperature :10 $^{\circ}$ C ~35 $^{\circ}$ C Relative humidity: 20%~85%
Detection principle	Impedance method (WBC, RBC, PLT) and cyanide free colorimetric method (HGB)	Power supply	100~240VAC, 50/60 Hz, 150VA
Detection items	The detection items include maximum 21 parameters (WBC, Lym#, Mid#, Gran#, Lym%, Mid%, Gran%, RBC, HCT, MCV, MCH, MCHC, RDW-CV, RDW-SD, PLT, MPV, PDW, PCT, HGB, P-LCC , P-LCR , 3 histograms, alarm for abnormal erythrocytes, leukocyte and platelet	Dimension	420(L) x 295(W) x 430mm(H)
Leading technology	Cell pulse baseline tracking and restore technology High voltage burning technology Built-in liquid sensor technology High speed pulse collecting and discrimination technology Intelligent floating threshold technology	Net weight	\leq 28kg
Reagent	3-Part diluent and lyse		
Report print	Built-in thermal printer Support external more than 5 types USB HP printers (optional) Support different language when leaving the factory Multiple built-in report templates available		








V5000 Dry Micro

Chemiluminescence Immunoassay Analyzer

Micro Chemiluminescence
Giant Difference



SPECIFICATION

	Principle	CRET Homogeneous CLIA
	Sample Type	Whole blood/Serum/Plasma/ Oropharyngeal/Nasopharyngeal swab, etc.
	Sample mixing	Built-in mixer
	Dimensions	325 × 231 × 213 mm
	Communication	LIS/HIS/5G transmission



V5000 Dry Micr

Chemiluminescence Immunoassay Analyzer

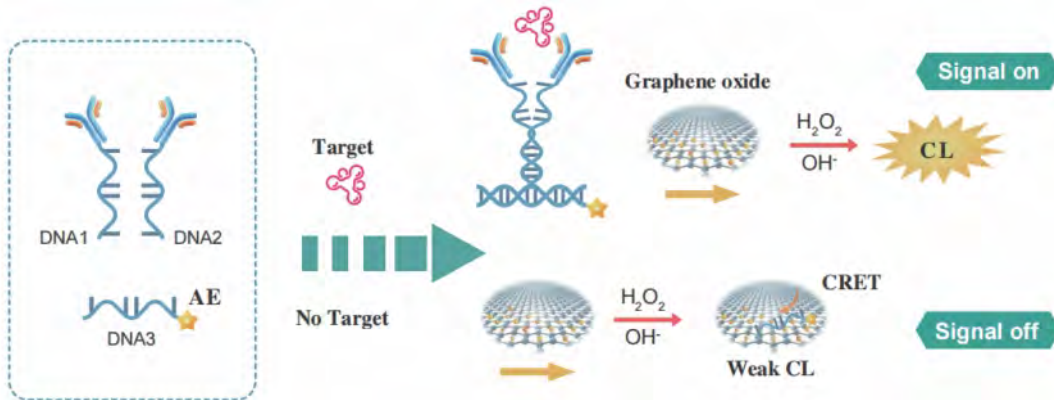
REAGENT

- **Lyophilized Beads**
Adaptable to complex transportation environments
- **Individual packaging**
Reduce excessive reagent consumption
- **Long shelf-life**
Maximum 36 months long shelf life
- **Liyofilize boncuklar**



TECHNOLOGY HIGHLIGHTS

Principle of Chemiluminescence Resonance Energy Transfer (CRET)



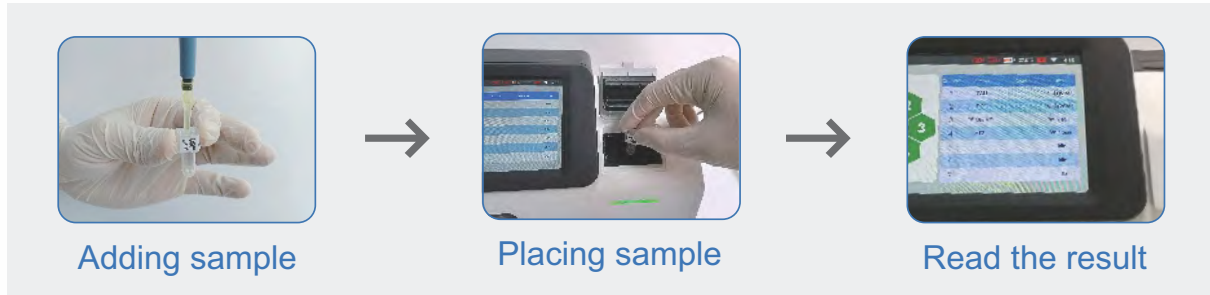
- Combined with nucleic acid technology
Available to transform into molecular diagnostic platform

- Covers more than 95% of clinical testing items
Including proteins and small molecules

V5000 Dry Micr

Chemiluminescence Immunoassay Analyzer

EASY ACCESS



ASSAY LIST

Bone Metabolism	Inflammation	Cardiac Markers
25-OH VD	CRP	hs-cTnT
Glyco Met	PCT	CK-MB
HbA1c	IL-6	MYO
Thyroid	Immunoglobulin	NT-proBNP
FT3	IgE	BNP
FT4	Hormones	D-Dimer
TT3	Prog	Tumor Markers
TT4	T	tPSA
TSH	E2	fPSA
Anemia	PRL	Infectious Disease
VB ₁₂	LH	SARS-CoV-2 Ag
Fer*	FSH	...
FA*	AMH	
...	β-HCG	
	Cortisol	

V300

Immunofluorescence Analyzer

Application

Emergency Laboratory, Clinical Department and other Medical Center, Examination Center, Research Laboratory and so on

- One-step operation to complete the testing
- Automatically identify test items, throw away card, print result, and upload to LIS



Add test items through ID card. Then insert reagent card and result will be printed after testing.



Parameters

- Testing principle: Fluorescence immunoassay
- Testing channel: Single
- Testing speed: Time for one test < 10s
- Sample type: 9 sample types to customized (e.g. Serum, plasma, whole blood, urine, etc.)
- Testing items: Not more than 255 items
- Number of items per card: Multiple items per card are supported
- Screen size: 8.1 inch touch screen
- Operating system: Android
- Data storage volume: >10000 records
- Data transmission: USB, support LIS
- Language interface: Chinese, English (customized)
- Printer: Built-in thermal printer, Can be connected to a specified model printer
- Reagent card code: Bar code, QR code (customized)
- Applicable card type: ID card
- Dimension: 325 mm *159 mm *202 mm
- Net weight: 3 kg

V300

Immunofluorescence Analyzer

TEST KIT



Immunofluorescence Reagent

Category	Test Item	Item No.	Sample	Reaction Time	Linearity Range	Reference
Infection	CRP	SA.02.00002 (SEMI) / SJ.02.00002 (AUTO)	Serum / Plasma	3 min	0.5-200 mg/L	10 > mg/L
	PCT	SA.02.00004 (SEMI) / SJ.02.00004 (AUTO)	Serum / Plasma	15 min	0.1-100 ng/mL	0.5 > ng/mL
	SAA	SA.02.00005 (SEMI) / SJ.02.00005 (AUTO)	Serum / Plasma	15 min	2.0-100 mg/mL	10 > mg/mL
	IL-6	SA.02.00006 (SEMI) / SJ.02.00006 (AUTO)	Serum / Plasma	15 min	3.0-4000 pg/mL	7.5 > pg/mL
	CRP / SAA	SA.02.00007 (SEMI) / SJ.02.00007 (AUTO)	Serum / Plasma	15 min	CRP: 0.5-150 mg/L SAA: 0.5-300 mg/L	CRP < 8.28 mg/L SAA < 10 mg/L
	PCT / IL-6	SA.02.00008 (SEMI) / SJ.02.00008 (AUTO)	Serum / Plasma	15 min	IL-6: 10-1000 pg/mL PCT: 0.1-40 ng/mL	IL-6 < 15 pg/mL PCT < 0.5 ng/mL
	HBP / PCT	SA.02.00053 (SEMI) / SJ.02.00053 (AUTO)	plasma	15 min	HBP: 1-200 ng/mL PCT: 0.05-50 ng/mL	HBP < 15 ng/mL PCT < 0.5 ng/mL
HBP	SA.02.00054 (SEMI) / SJ.02.00054 (AUTO)	Plasma	15 min	5-300 ng/mL	15 > ng/mL	
Sex Hormone	PROG	SA.02.00009 (SEMI) / SJ.02.00009 (AUTO)	Serum / Plasma	15 min	1.2-120 nmol/L	Follicular phase: 0.6-19 nmol/L Ovipoist period: 0.95-6.68 nmol/L Luteal phase: 6.8-72 nmol/L The first trimester of pregnancy: 12.4-190.8 nmol/L The first trimester of pregnancy: 48.97-190.8 nmol/L Menopause: 0-3.2 nmol/L Male: 0.31-2.67 nmol/L
	FSH	SA.02.00010 (SEMI) / SJ.02.00010 (AUTO)	Serum / Plasma	15 min	2-100 IU/L	Follicular phase: 1.5-7.5 IU/L Ovipoist period: 2.8-12.5 IU/L Luteal phase: 1.8-5.0 IU/L After menopause: 15.0-76.0 IU/L Male: 1.25-19.62 IU/L
	LH	SA.02.00011 (SEMI) / SJ.02.00011 (AUTO)	Serum / Plasma	15 min	2-100 IU/L	Follicular phase: 2-12.5 IU/L Ovipoist period: 13-106 IU/L Luteal phase: 0-10.5 IU/L After menopause: 7-65.2 IU/L Male: 1.15-8.65 IU/L
	β-HCG	SA.02.00012 (SEMI) / SJ.02.00012 (AUTO)	Serum / Plasma	15 min	4-10000 mIU/mL	10 > m IU/mL
	PRL	SA.02.00013 (SEMI) / SJ.02.00013 (AUTO)	Serum / Plasma	15 min	40-3000 μIU/mL	Pre-menopausal women: 74-566 μIU/mL Postmenopausal women: 68-528 μIU/mL Male: 63.5-350 μIU/mL
	Cor	SA.02.00014 (SEMI) / SJ.02.00014 (AUTO)	Serum / Plasma	15 min	0.5 μg/dL-36 μg/dL	3.56-22.73 μg/dL
	AMH	SA.02.00015 (SEMI) / SJ.02.00015 (AUTO)	Serum / Plasma	15 min	0.1-24 ng/mL	2-14 ng/mL



V300

Immunofluorescence Analyzer

TEST KIT



Immunofluorescence Reagent

Category	Test Item	Item No.	Sample	Reaction Time	Linearity Range	Reference
Thyroid Hormone	TSH	SA.02.00016 (SEMI) / SJ.02.00016 (AUTO)	Serum / Plasma	15 min	0.1-100 μ U/mL	0.3-5.6 μ U/mL
	T3	SA.02.00017 (SEMI) / SJ.02.00017 (AUTO)	Serum / Plasma	15+10 min	0.77-6.0 nmol/L	1.34-2.73 nmol/L
	T4	SA.02.00018 (SEMI) / SJ.02.00018 (AUTO)	Serum / Plasma	15 min	15-300 nmol/L	78.51-157.01 nmol/L
	FT3	SA.02.00057 (SEMI) / SJ.02.00057 (AUTO)	Serum / Plasma	10 min	1.6-46 pmol/L	3.1-6.8 pmol/L
	FT4	SA.02.00058 (SEMI) / SJ.02.00058 (AUTO)	Serum / Plasma	10 min	3.2-77.2 pmol/L	11.5-22.7 pmol/L
Cardiac Marker	CK-MB	SA.02.00001 (SEMI) / SJ.02.00001 (AUTO)	Serum / Plasma	15 min	CK-MB: 1-100 ng/mL	CK-MB < 5 ng/mL
	cTnI	SA.02.00019 (SEMI) / SJ.02.00019 (AUTO)	Serum / Plasma	15 min	0.1-40 ng/mL	0.5 > ng/mL
	Myo	SA.02.00020 (SEMI) / SJ.02.00020 (AUTO)	Serum / Plasma	15 min	5-400 ng/mL	60 \geq ng/mL
	NT-proBNP	SA.02.00021 (SEMI) / SJ.02.00021 (AUTO)	Serum / Plasma	15 min	50-20000 pg/mL	300 \geq pg/mL (< 75 years old) 450 \geq pg/mL (\geq 75 years old)
	H-FABP	SA.02.00022 (SEMI) / SJ.02.00022 (AUTO)	Serum / Plasma	15 min	3-100 ng/mL	\leq 7 ng/mL
	D-Dimer	SA.02.00023 (SEMI) / SJ.02.00023 (AUTO)	Serum / Plasma	15 min	0.1-10 mg/L	< 0.5 mg/L
	cTnI / Myo / CK-MB (3 In 1)	SA.02.00024 (SEMI) / SJ.02.00024 (AUTO)	Serum / Plasma	15 min	cTnI: 0.1-40 ng/mL CK-MB: 1-100 ng/mL Myo: 5-400 ng/mL	cTnI < 0.3 ng/mL CK-MB < 5 ng/mL Myo < 60 ng/mL
	cTnI / NT-proBNP	SA.02.00025 (SEMI) / SJ.02.00025 (AUTO)	Serum / Plasma	15 min	cTnI: 0.1-40ng/mL NT-proBNP: 50-20000 pg/mL	cTnI < 0.5ng/mL NT-proBNP \leq 300pg/mL (75 > years old) NT-proBNP \leq 450pg/mL (\geq 75 years old)
cTnT	SA.02.00052 (SEMI) / SJ.02.00052 (AUTO)	Serum / Plasma / Whole blood	15 min	30.0-10000.0pg/mL	100 > pg/mL	
Kidney	NGAL	SA.02.00026 (SEMI) / SJ.02.00026 (AUTO)	Serum / Plasma	10 min	50-1000 ng/mL	60 > ng/mL
	mAlb	SA.02.00027 (SEMI) / SJ.02.00027 (AUTO)	Urine	15 min	5-300 mg/L	0-20 mg/L
	CysC	SA.02.00028 (SEMI) / SJ.02.00028 (AUTO)	Serum / Plasma	5 min	0.2-10 mg/L	0.5-1.1 mg/L
	β 2-MG	SA.02.00029 (SEMI) / SJ.02.00029 (AUTO)	Serum / Plasma	15 min	0.3-20 mg/L	1.0-2.7 mg/L
Diabetes	HbA1c	SA.02.00030 (SEMI) / SJ.02.00030 (AUTO)	Whole Blood	15 min	2-14%	3.8 ~ 5.8%
Gastric Function	PG I / II	SA.02.00033 (SEMI) / SJ.02.00033 (AUTO)	Serum / Plasma	15 min	PG I : 70-200 ng/mL PG II: < 20 ng/mL	PG I : 5-200 ng/mL PG II: 2.5-100 ng/mL
	G17	SA.02.00056 (SEMI) / SJ.02.00056 (AUTO)	Serum / Plasma	15 min	1-50 pmol/L	1-7 pmol/L



V300

Immunofluorescence Analyzer

TEST KIT



Immunofluorescence Reagent

Category	Test Item	Item No.	Sample	Reaction Time	Linearity Range	Reference
Cancer	CEA	SA.02.00034 (SEMI) / SJ.02.00034 (AUTO)	Serum / Plasma	15 min	2.5-1000 ng/mL	35 > ng/mL
	AFP	SA.02.00035 (SEMI) / SJ.02.00035 (AUTO)	Serum / Plasma	15 min	5-1000 ng/mL	25 > ng/mL
	PSA	SA.02.00036 (SEMI) / SJ.02.00036 (AUTO)	Serum / Plasma	15 min	2.0-100.0 ng/mL	4 > ng/mL
	TK1	SA.02.00055 (SEMI) / SJ.02.00055 (AUTO)	Serum / Plasma	15 min	1-20 pmol/L	2 > pmol/L
Infectious Disease	SARS-Cov-2	SA.02.00037 (SEMI) / SJ.02.00037 (AUTO)	Naso / Oropharyngeal swab	15 min	/	/
	Dengue IgG / IgM	SA.02.00038 (SEMI) / SJ.02.00038 (AUTO)	Serum / Plasma / Whole blood	15 min	/	/
	SARS-Cov-2 / FluA+B	SA.02.00039 (SEMI) / SJ.02.00039 (AUTO)	Naso / Oropharyngeal swab	15 min	/	/
	SARS-CoV-2 IgG / IgM	SA.02.00040 (SEMI) / SJ.02.00040 (AUTO)	Serum / Plasma	15 min	/	/
	HP-Ab	SA.02.00041 (SEMI) / SJ.02.00041 (AUTO)	Serum / Plasma	15 min	/	/
	HP-Ag	SA.02.00042 (SEMI) / SJ.02.00042 (AUTO)	Feces	15 min	/	/
	FOB	SA.02.00043 (SEMI) / SJ.02.00043 (AUTO)	Feces	15 min	/	/
	p.f/pan	SA.02.00044 (SEMI) / SJ.02.00044 (AUTO)	Whole blood	15 min	/	/
	RSV	SA.02.00045 (SEMI) / SJ.02.00045 (AUTO)	Naso / Oropharyngeal swab	15 min	/	/
	Influenza A/B	SA.02.00046 (SEMI) / SJ.02.00046 (AUTO)	Naso / Oropharyngeal swab	15 min	/	/
	Strep A	SA.02.00047 (SEMI) / SJ.02.00047 (AUTO)	Naso / Oropharyngeal swab	15 min	/	/
	Adenovirus	SA.02.00048 (SEMI) / SJ.02.00048 (AUTO)	Naso / Oropharyngeal swab	15 min	/	/
	Mycoplasma IgM	SA.02.00049 (SEMI) / SJ.02.00049 (AUTO)	Serum / Plasma / Whole blood	15 min	/	/
	Influenza A/B+H1N1	SA.02.00050 (SEMI) / SJ.02.00050 (AUTO)	Naso / Oropharyngeal swab	15 min	/	/
	Dengue NS1 Ag	SA.02.00051 (SEMI) / SJ.02.00051 (AUTO)	Serum / Plasma / Whole blood	15 min	/	/
	Others	25-OH-VD	SA.02.00031 (SEMI) / SJ.02.00031 (AUTO)	Serum / Plasma	10 min	8-80 ng/mL
IgE		SA.02.00032 (SEMI) / SJ.02.00032 (AUTO)	Serum / Plasma	15 min	8-1000 IU/mL	Neonatal IgE was 0-15 iu/mL. IgE within 1 year: 0-15 IU/mL; 1-5 years IgE: 0-60 IU/mL; IgE for ages 6-9: 0-90 IU/mL; 10-15 years IgE: 0-200 IU/mL; Adult IgE: 0-100 IU/mL
VB12		SA.02.00059 (SEMI) / SJ.02.00059 (AUTO)	Serum / Plasma	15 min	150-1500 pg/mL	240-800 pg/mL



V300

Immunofluorescence Analyzer

TEST KIT



Colloidal Gold Reagent

Category	Test Item	Item No.	Sample	Reaction Time
Sex Hormone	HCG (GICA)	SA.03.00010 (SEMI) / SJ.03.00010 (AUTO)	Urine	5 min
	LH (GICA)	SA.03.00002 (SEMI) / SJ.03.00002 (AUTO)	Urine	5 min
Infectious Disease	HP-Ab (GICA)	SA.03.00003 (SEMI) / SJ.03.00003 (AUTO)	Serum / Plasma	15 min
	HP-Ag (GICA)	SA.03.00004 (SEMI) / SJ.03.00004 (AUTO)	Feces	15 min
	SARS-Cov-2 (LIA)	SA.03.00005 (SEMI) / SJ.03.00005 (AUTO)	Naso / Oropharyngeal swab	15 min
	SARS-Cov-2 (GICA)	SA.03.00006 (SEMI) / SJ.03.00006 (AUTO)	Naso / Oropharyngeal swab	15 min
	Flu A / B (GICA)	SA.03.00007 (SEMI) / SJ.03.00007 (AUTO)	Naso / Oropharyngeal swab	15 min
	SARS-Cov-2 / Flu A+B (GICA)	SA.03.00008 (SEMI) / SJ.03.00008 (AUTO)	Naso / Oropharyngeal swab	15 min
	SARS-CoV-2 IgG / IgM (GICA)	SA.03.00009 (SEMI) / SJ.03.00009 (AUTO)	Serum / Plasma	15 min
	Influenza A / B (LIA)	SA.03.00011 (SEMI) / SJ.03.00011 (AUTO)	Naso / Oropharyngeal swab	15 min
	Dengue IgG / IgM (GICA)	SA.03.00012 (SEMI) / SJ.03.00012 (AUTO)	serum / plasma / whole blood	15 min
	Dengue NS1 Ag (GICA)	SA.03.00013 (SEMI) / SJ.03.00013 (AUTO)	serum / plasma / whole blood	15 min



Diagnostic Rapid Tests

For Home Use

	Cat. No.	Specimen	Format	Pack	Cut off
Pregnancy (hCG)	FHC-101H	Urine	Dipstick	1 T	25mIU/mL
Pregnancy (hCG)	FHC-F101H	Urine	Dipstick	1 T	20mIU/mL
Pregnancy (hCG)	FHC-102H	Urine	Cassette	1 T	25mIU/mL
Pregnancy (hCG)	FHC-F102H	Urine	Cassette	1 T	20mIU/mL

Fertility
For Diagnostic Use

Female Fertility	Cat. No.	Cut-Off	Specimen	Format	Pack
hCG Pregnancy	FHC-101	20 mIU/mL, 25 mIU/mL*	Urine	Dipstick	50 T/100 T
	FHC-A101	40 mIU/mL			
	FHC-B101	200 mIU/mL			
	FHC-C101	500 mIU/mL	Urine	Dipstick	50 T/100 T
	FHC-D101	2000 mIU/mL			
	FHC-U101	10 mIU/mL			
	FHC-111	20 mIU/mL, 25 mIU/mL*			
	FHC-U111	10 mIU/mL	Urine	Dipstick (Canister Pack)	25 T
	FHC-102	20 mIU/mL, 25 mIU/mL*	Urine	Cassette	40 T
	FHC-A102	40 mIU/mL			
	FHC-B102	200 mIU/mL			
	FHC-C102	500 mIU/mL	Urine	Cassette	40 T
	FHC-D102	2000 mIU/mL			
	FHC-U102	10 mIU/mL			
	FHC-103	25 mIU/mL*			
	FHC-F103	20 mIU/mL	Urine	Midstream	No Box
	FHC-U103	10 mIU/mL			
	FHC-201	20 mIU/mL, 25 mIU/mL*	S/P/U	Dipstick	50 T/100 T
	FHC-U201	10 mIU/mL	S/P/U	Dipstick	50 T/100 T
	FHC-211	20 mIU/mL, 25 mIU/mL*	S/P/U	Dipstick (Canister Pack)	25 T
	FHC-U211	10 mIU/mL	S/P/U		
	FHC-202	20 mIU/mL, 25 mIU/mL*	S/P/U	Cassette	40 T
	FHC-U202	10 mIU/mL	S/P/U	Cassette	40 T
FHC-402	25 mIU/mL*				
FHC-U402	10 mIU/mL	WB/S/P	Cassette	40 T	



Diagnostic Rapid Tests

Fertility
For Diagnostic Use

Female Fertility					
ToRCH Combo (Toxo, Rubella, CMV, HSV 1/2)	ITOG-345	IgG Combo	S/P	Cassette	25 T
	ITOG-445		WB/S/P		
	ITOM-345	IgM Combo	S/P	Cassette	25 T
	ITOM-445		WB/S/P		
	ITOGM-345	IgG/IgM Combo	S/P	Cassette	25 T
	ITOGM-445		WB/S/P		
ITOGM-385	IgG/IgM Combo	S/P	Cassette	25 T	
ITOGM-485		WB/S/P			
		Cat. No.	Specimen	Format	Pack
Toxo	ITG-302	IgG	S/P	Cassette	40 T
	ITG-402		WB/S/P		
	ITM-302	IgM	S/P	Cassette	40 T
	ITM-402		WB/S/P		
	ITGM-302	IgG/IgM	S/P	Cassette	40 T
	ITGM-402		WB/S/P		
	ITGM-325	IgG/IgM Combo	S/P	Cassette	25 T
	ITGM-425		WB/S/P		

Gastrointestinal Diseases
For Diagnostic Use

Gastrointestinal Diseases					
		Cat. No.	Specimen	Format	Pack
<i>H. pylori</i>	IHP-302	Antibody	S/P	Cassette	40 T
	IHP-401	Antibody	WB/S/P	Dipstick	50T
	IHP-402	Antibody	WB/S/P	Cassette	40 T
	☆ IHPM-402	IgM	WB/S/P	Cassette	25T
	IHP-601	Antigen	Feces	Dipstick	25 T
	IHP-602	Antigen	Feces	Cassette	25 T
	☆ IHP-802	Antigen	Oral fluid	Cassette	20T
	☆ IHP-904	Antigen	Tartar	Test Paper	10 T

Diagnostic Rapid Tests

Gastrointestinal Diseases

For Diagnostic Use

Tropical Diseases

Dengue	IDEN-402	IgG/IgM	WB/S/P	Cassette	10 T
	IDES-402	NS1	WB/S/P	Cassette	10 T
	IDEC-425	IgG/IgM & NS1 Combo	WB/S/P	Cassette	25 T
Typhoid	ITY-302	IgG/IgM	S/P	Cassette	40 T
	ITY-402	IgG/IgM	WB/S/P	Cassette	40 T
	ITY-401	IgG/IgM	WB/S/P	Dipstick	50 T
Salmonella	ISTY-602	<i>Salmonella typhi</i> Antigen	Feces	Cassette	25 T
	ISPT-602	<i>Salmonella paratyphi</i> Antigen	Feces	Cassette	25 T
	ISTP-625	<i>Salmonella typhi</i> & <i>paratyphi</i> Antigen Combo	Feces	Cassette	10 T
	☆ ISTPB-425	<i>Salmonella typhi</i> & <i>paratyphi B</i> Antibody Combo	WB/S/P	Cassette	25 T
	ISTPB-625	<i>Salmonella typhi</i> & <i>paratyphi B</i> Antigen Combo	Feces	Cassette	10 T
Malaria	IMA-401	P.f.	WB	Dipstick	50 T
	IMA-402	P.f.	WB	Cassette	40 T
	☆ IMAB-402	Antibody	WB/S/P	Cassette	25T
	IMPN-402	P.f./ Pan	WB	Cassette	25 T
	IMPV-402	P.f./P.v.	WB	Cassette	25 T
	IMPVF-402	P.f./P.v. /Pan	WB	Cassette	25 T

Hepatitis & Blood Banking & STIS

For Diagnostic Use

Sexually Transmitted Infections (STIS)

	Cat. No.		Specimen	Format	Pack
HIV	IHI-402	HIV 1, 2	WB/S/P	Cassette	40 T
	IHI-302	HIV 1, 2	S/P	Cassette	40 T
	IHI-401	HIV 1, 2	WB/S/P	Dipstick	50 T
	IHI-402S	HIV 1, 2 (Single Use kit)	WB	Cassette	1 T
	IHI-T401	HIV 1, 2, O	WB/S/P	Dipstick	50 T

Diagnostic Rapid Tests

Hepatitis & Blood Banking & STIS For Diagnostic Use

Sexually Transmitted Infections (STIS)

HIV	IHI-T402	HIV 1, 2, O	WB/S/P	Cassette	40 T
	IHI-T402S	HIV 1, 2, O (Single Use kit)	WB	Cassette	1 T
	IHIG-402	HIV p24 Antigen	WB/S/P	Cassette	40 T
	IHIBG-425	HIV 1, 2 & p24 Combo	WB/S/P	Cassette	25 T
	IHIBG-402	HIV 1, 2 & p24	WB/S/P	Cassette	25 T
	IHIBG-T402	HIV 1, 2, O & HIV p24 Combo	WB/S/P	Cassette	25 T
	IHI-102	HIV 1, 2	Urine	Cassette	25 T
Syphilis	IHI-802	HIV 1, 2	Oral fluid	Cassette	20 T
	☆ ISY-102		Urine	Cassette	25 T
	ISY-301		S/P	Dipstick	50 T
	ISY-302		S/P	Cassette	40 T
	ISY-401		WB/S/P	Dipstick	50 T
	ISY-402		WB/S/P	Cassette	40 T

Respiratory Tract Diseases For Diagnostic Use

Respiratory Tract Diseases

	Cat. No.		Specimen	Format	Pack
Human Metapneumovirus (HMPV)	IHMPV-502		NP Swab	Cassette	20 T
	ICOV-501 (ICOV-511)		NP Swab	Strip	50 T
	ICOV-502 (INCP-502/INCP-G502)		Swab	Cassette	20 T
	INCP-402		WB/S/P	Cassette	25 T

Hepatitis Markers

	Cat. No.		Specimen	Format	Pack
Hepatitis A (HAV)	IHA-402	IgM	WB/S/P	Cassette	25 T
	IHAGM-425	IgG/IgM Combo	WB/S/P	Cassette	25 T
Hepatitis B (HBV)	IHBSG-402	HBsAg	WB/S/P	Cassette	40 T
	IHBSG-301	HBsAg	S/P	Dipstick	50 T
	IHBSG-302	HBsAg	S/P	Cassette	40 T
	IHBSG-401	HBsAg	WB/S/P	Dipstick	50 T
	IHBSB-401	HBsAb	WB/S/P	Dipstick	50 T
	IHBSB-402	HBsAb	WB/S/P	Cassette	40 T
	IHBSB-301	HBsAb	S/P	Dipstick	50 T



Diagnostic Rapid Tests

Hepatitis & Blood Banking & STIS For Diagnostic Use

Hepatitis Markers						
Hepatitis B	IHBSB-302	HBsAb	S/P	Cassette	40 T	
	IHBCB-302	HBcAb	S/P	Cassette	40 T	
	IHBEB-302	HBeAb	S/P	Cassette	40 T	
	IHBEG-302	HBeAg	S/P	Cassette	40 T	
	IHB-355	HBV Combo	S/P	Cassette	25 T	
Hepatitis C (HCV)	IHC-301		S/P	Dipstick	50 T	
	IHC-302		S/P	Cassette	40 T	
	IHC-401		WB/S/P	Dipstick	50 T	
	IHC-402		WB/S/P	Cassette	40 T	
Hepatitis E (HEV)	☆ IHE-102	Antigen	Urine	Cassette	25 T	
	IHE-302	IgG/IgM	S/P	Cassette	40 T	

Tumor Markers For Diagnostic Use

Tumor Markers	Cat. No.	Specimen	Format	Pack	Cut-Off
Fecal Occult Blood (FOB)	TFO-601	Feces	Dipstick	25 T	25 ng/mL, 40 ng/mL,
	TFO-602	Feces	Cassette	25 T	50 ng/mL*, 100 ng/mL

Cardiac Markers For Diagnostic Use

Cardiac Markers	Cat. No.	Specimen	Format	Pack	Cut-Off
Troponin I (cTnI)	CTI-402	WB/S/P	Cassette	10 T	0.5 ng/mL
Troponin T (cTnT)	CTNT-402	WB/S/P	Cassette	10 T	0.5 ng/mL
D-Dimer	CDM-402	WB/P	Cassette	10 T	500 ng/mL

Diagnostic Rapid Tests

Drugs of Abuse For Employment and Insurance (E&I)

	Cat. No.	Pack
Multi-Drug 2~17 Drugs Rapid Test Cassette	DOA-125~1175	25 T
Multi-Drug 2~20 Drugs Rapid Test Panel	DOA-124~1204	25 T
Multi-Drug 2~6 Drugs Rapid Test Panel (1 Min Result) ☆	DOA-124~164	25 T
Multi-Drug 2~15 Drugs Rapid Test 1-Step Cup	DOA-127~1157-A1	25 T
Multi-Drug 2~12 Drugs Rapid Test 1-Step Cup	DOA-127~1127-A2	25 T
Multi-Drug 2~22 Drugs Rapid Test 1-Step Cup	DOA-127~1227-A3	25 T
Multi-Drug 2~8 Drugs Rapid Test 1-Step Cup	DOA-127~187-A4	25 T
Multi-Drug 2~18 Drugs Rapid Test 1-Step Cup	DOA-127~1187-A10	25 T
Multi-Drug 2~12 Drugs Rapid Test Key Cup	DOA-127~1127-B1	25 T
Multi-Drug 2~16 Drugs Rapid Test Key Cup	DOA-127~1167-B2	25 T
Adulteration Dipstick (Analytes: OX,NIT,SG,GLU,pH,CRE)	DAT-111	25 T



Rayto

 www.rayto.com

RT- 7600

Auto Hematology Analyzer

Features

- 20 parameters+3 histograms
- 3-part differentiation of WBC
- 2 counting modes: whole blood and prediluted
- 60 samples per hour
- 10.4" TFT color LCD with touch screen
- Built-in thermal printer, optional external printer
- External AC adapter avoids electronic nosies, enhancing accuracy
- Up to 50000 sample results (including histograms) can be stored
- Multi-language software available on request



Chemray 240

Automated Chemistry Analyzer

Features

- Automatic, Random Access
- Up to 240 tests per hour
- Reagent pre-heating, liquid level detection
- Automatic 10 steps washing system (optional), Low carry-over
- Labor saving, simple programming and real walk-away operation
- 24 hours non-stop reagent cooling compartment
- Reagent open system, close system on request
- Micro-volume for sample and reagent
- User-friendly software based on Windows



RT-1904C

Semi-auto chemistry Analyzer

Features

- Easy Windows operation system with mouse, large color LCD display
- Reagent pen system supports flow cell and cuvette mode, close system on request
- Analytical modes include kinetic, fixed time, bichromatic end point with or without reagent blank or sample blank, linear or non-linear calibration
- Real-time curve monitoring enhances the reliability of result
- Large memory, up to 160 test protocols can be programmed
- Powerful QC function; Westguard Multi-rule, Levey Jennings plot, 2 controls per test
- Auto power-on self-check
- Additional lamp saving
- Multiform result output including patient comprehensive report
- Software optional for date management in PC
- Easy maintenance, no service engineers required to change lamp, tube etc



RT- 2600C

Microplate Washer

Features

- Fully automatic.
- Easy Windows operation system, large LCD display.
- Washes flat, round and V-bottom strips and plates.
- 12-way or 8-way manifold, automatic and manual positioning.
- Large memory to store up to 50 wash protocols.
- Automatic monitoring of air, vacuum and pressure, automatic rinse cycle.
- Washing pressure, volume and time adjustable.
- Liquid level sensor and alert feature.
- No special airtight bottle required for wash bottle.
- Easy maintenance design.



RT-2100C

Microplate Reader

Features

- Easy Windows operation software, With touch screen or mouse, Large LCD display
- 8-channel optical fiber system enables 5 secs' reading for the whole plate
- Bichromatic measurement, calculation modes include ABS,Cut-off, Curve,Linear,Log and Exponent regression
- Large memory to store at least 100 test protocols and 10000 sample results
- Auto self-check when power on
- With lamp sleeping and wake-up function
- Random positive control and negative control setting
- Multi-assay feature enables up to 12 different assays on one plate
- Powerful QC function: Grubs, Westguard rules, Levey Jennings plot (optional)
- Multiform result output including patient comprehensive report
- Easy software upgrade by SD card support USB mouse and keyboard
- Ability to communicate with PC for data management (optional)



RT-2204C

Coagulation Analyzer

Features

- 4 channels. (4 durable LED detectors for up to 4 different parameters analysis)
- Easy Windows operation system with touch screen or mouse, large LCD display.
- Advanced scattered light principle and percentage analysis ensure accurate results
- Low reagent consumption.
- Large memory to store up to 10000 results.
- QC and calibration program incorporated.
- Multiform result output including patient comprehensive report
- Auto power-on self-check feature
- Electronically-linked pipette optional





JM-9000 SERIES

Automatic Electrolyte Analyzer



5 Parameters
Full Auto Electrolyte Analyzer
K, Na, Cl, Ca, pH, TCO2 ,AG, nCa, Tca

JM9000 SERIES

ELECTROLYTE ANALYZER

Technical specifications

Model	JM 9900	JM 9600	JM 9800	JM 9100	JM 9801	JM 9101
Measuring time	K, Na, Cl	K, Na, Cl	K, Na, Cl	K, Na, Cl	K, Na, Cl	K, Na, Cl
	Ca, pH, TCO ₂	TCO ₂	Ca, pH		Ca, pH	
Calculating item	AG, nCa, Tca	AG	nCa, Tca	—	nCa, Tca	—
Sampler method	Automatic				Manual	
Measuring time	55s	55s	40s	40s	25s	25s
Full time	90s	90s	60s	60s	40s	40s
Sample size	160μl	160μl	100μl	100 μl	100μl	100μl
Data storage	10000					
Communication interface	232 interface					
Display	240X64LCDLiquid crystal display, backlight					
Printer	58mm thermal printer					
Automatic sampler system	25-bit sampler system for option (20 samples, 2 QC, 1 emergency case, 1 washing)					—
Air bubble test	Yes					
Alarm for waste liquid overflow	Yes					
Alarm for standard liquid level	Yes					
Standard liquid level indicator lamp	Yes					
Sample liquid level indicator lamp	Yes					
Power supply	AC220V±22V or AC110V±11V			50Hz~60Hz	50W	
Product size	408mmX390mmX230mm					
Product weight	8kg(without sampler system)		1kg(sampler system)		6KG	
Measuring method	ISE. TCO ₂ adopts pressure-measuring method.					
Working condition	Temperature: 5°C~40°C Relative humidity ≤85%					

Measurement parameters specifications

All Series products	Measuring item	Measuring scope	Resolving power	Precision
JM9900	K ⁺	0.50~15.00	0.01	CV≤1.0%
JM9600	Na ⁺	30.0~200.0	0.1	CV≤1.0%
JM9800	Cl ⁻	30.0~200.0	0.1	CV≤1.0%
JM9100	Ca ²⁺	0.10~5.00	0.01	CV≤1.0%
JM9801	pH(H ⁺)	4.00~9.00	0.01	CV≤1.0%
JM9101	TCO ₂	4.0~70.0	0.1	CV≤3.0%



Microlab 305 Pro

ES-101C

7-inch large touch screen, interactive and friendly interface
5 USB ports, 1 Ethernet port Intelligent humanized software
Multi-functional incubator, precise temperature control



Product Features

- Long warranty period, 5 years for filters
- World-class brand accessories with reliable quality
- Large storage capacity, can store more than 300 test parameters and 200000 sample results
- One-piece fusion cuvette, supporting both modes of flow cell and cuvette for testing
- Support real-time printing of sample results, can be connected to external printer
- Support connection with computer software

JM-300 Biological Microscope

- Excellent image quality with infinite optical system
- Comfortable operating with ergonomic structure
- Better illumination with sliding-in centerable condenser, convenient replacement with phase contrast and dark field condenser.
- Viewing head
siedentopfbinoocular head, 30° inclined,
interpupillary distance 48-75mm
- Eyepiece
wide field eyepiece wf 10x/18
- Objective
achromatic objective 4X, 10X, 40X, 100X
- Nosepiece
quadruple nosepiece
- Stage
double layers mechanical stage 140X140MM/75X50MM
- Condenser
sliding-in centerable condenser NA1.25
- Focusing
coaxial coarse and fine adjustment, moving range 20mm
- illumination
220V or 110V/6V200W halogen lamp, brightness adjustable



Extra Wide Field Eyepiece EW10X/20 with Diopter Adjustment as Optional



Comfortable Observation with Eyepoint and interpupillary adjustable



Sliding-in Centerable Condense Adjustable



Handle for easy carrying



Lamp Replacement by Direct Removing Housing

JM-102A

Student Biological Microscope

- Sharp image display with excellent optical function
 - Small space occupancy with integral stand design, low environment requirement with anti-mould technology
 - Comfortable operation with ergonomic design principle
-
- Viewing head
head Monocular Head , at45° , 360°Rotatable
-
- Eyepiece
wide field Eyepiece WF10X
-
- Objective
Achromatic DIN4X,10X,40X(S)
-
- Stage
Plain Stage with Slide Clips , 120*130mm
-
- Condenser
Single Lens with Disc Diaphragm
-
- Separate
Coarse & Fine Adjustment with Tension Control
-
- illumination
Built-in Illumination, Incandescent Lamp 110V or 220V/15W



JM-105B

Student Biological Microscope

- Excellent image quality with infinite optical system
- Comfortable operating with ergonomic structure
- Better illumination with sliding-in centerable condenser, convenient replacement with phase contrast and dark field condenser.

- Eyepiece
H5X, H10X, H16X

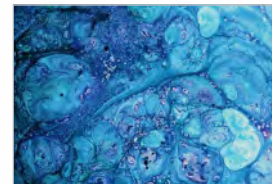
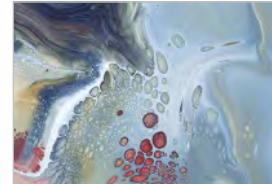
- Objective
35mm Objective 10X, 40X(S)

- Stage
Plain Stage with Slide Clips. 110x120mm

- Condenser
Lris Diaphragm

- illumination
PLan-concave Mirror

- Options
Objective 4x, 60x(s); Attachable Mechanical Stage;
Attachable LLLuminator



JM-107T

Biological Microscope

- With precision machining equipment and advanced alignment technics, making improvement on the bass of traditional microscope JMS-107T ,it is an ideal instrument in biological ,hisrological,pathological field and can be widely used in academic demonstration and research.



- Viewing head
Sliding Binocular Head

- Eyepiece
Eyepiece Wf10x

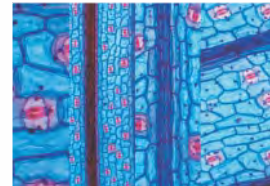
- Objective
Achromatic Objective 4x., 10x, 40x, 100x

- Stage
Double Layers Mechanical Stage 140x140mm/75x50mm

- Condenser
Abbe NA1.20 with Iris Diaphragm & Filter

- illumination
Halogen Lamp 100V-240V/6V20W lan-concave Mirror

- Package
Styrofoam/Carton



JMLCD-120 Digital Microscope

- Variety observation mode: observe image on LCD screen and ocular at the same time; support USB, AV, S-Video and Audio output and display real-time image on TV and PC at the same time.
- 2.5 TFT LCD screen with 4 X digital zooming, rotatable at maximum 100° elevation angle and 180° pivoting. Built-in 3M pixel digital camera facilitates capturing images, video and audio with no messy wires or power cords.
- Expandable to max 1G Bytes SD Card slot for more storage capacity.
- Support windows 2000/XP/Vista and equipped with powerful image processing software.
- Integrated traditional optics and digital technology, widely used in teaching, medical, biological and scientific research field.



JM-110M

Biological Microscope

- advanced technology and excellent cost performance
 - The ideal instrument in biological, histological, pathological field and can be widely used in academic demonstration and research
-
- Viewing head
siedentopf binocular viewing head,
inclined at 30°, 360° rotatable
-
- Eyepiece
WF10X/18
-
- Objective
achromatic objective 4X, 10X, 40X, 100X
-
- Nosepiece
quadruple nosepiece
-
- Stage
double layers mechanical stage, crosstravel 78X54mm,
using low-positioned x/y coaxial control knob
-
- Condenser
abbe condenser NA1.25 with aperture diaphragm
-
- Focusing
coaxial coarse & fine adjustment, fine division 0.002mm
-
- illumination
3W led



JM-120A

Binocular Biological Microscope

- Sharp image display with excellent optical function
- Small space occupancy with integral stand design, low environment requirement with anti-mould technology
- Comfortable operation with ergonomic design principle



- Viewing head
compensation free binocular head, inclined at 30°
interpupillary distance 55-75mm

- Eyepiece
wide field eyepiece wf 10x/18

- Objective
achromatic objective 4X, 10X, 40X, 100X

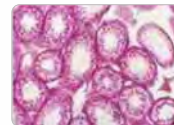
- Nosepiece
quadruple nosepiece

- Stage
double layers mechanical stage, cross travel 78X54mm,
using low-positioned x/y coaxial control knob

- Condenser
abbe condenser NA1.25 with aperture diaphragm

- Focusing
coaxial coarse & fine adjustment, fine division

- illumination
3W led



Higher Contrast and Sharper Image with High Quality Objectives



Comfortable Operation with Low Position Coarse & Fine Adjustment Knobs



Available to observe the specimen from rear of the body



Universal Centrifuge

Specification:

Model	JM-036	JM-036H	JM-036HS
Overall dimension	320 x 400 x 320mm	320 x 400 x 320mm	320 x 430 x 330mm
Drive motor	Brush motor, 100W	Brushless, 153W, 24VDC	Brushless, 153W, 24VDC
Chamber	Stainless steel #304	Stainless steel #304	Stainless steel #304
Rotor	Interchangeable	Interchangeable	Interchangeable
Speed indicator	LED, 3-digit x 100rpm	LED, 3-digit x 100rpm	LED, 4-digit x 10rpm
Speed control	Microprocessor	Microprocessor	Microprocessor
Timer	LED digital, 0-99 min.	LED digital, 0-99 min.	LED digital, 0-99 min.
Power supply	100V ~ 240V, 50/60Hz,	100V ~ 240V, 50/60Hz,	100V ~ 240V, 50/60Hz,
Speed (rpm)	0 – 12000rpm	1000 – 15000rpm adjustable	1000 – 15000 rpm adjustable
Brake	Automatic braking system	Automatic braking system	Automatic braking system
Safety interlocking lid	Yes	Yes	Yes
Lid open override	Yes	Yes	Yes
Imbalance detection	Yes, alarm & brake	Yes, alarm & brake	Yes, alarm & brake
Overheat alarm	Yes	Yes	Yes
ERROR detection	Yes, (5 causes)	Yes (5 causes)	Yes, (5 causes)
Emergency STOP	Yes	Yes	Yes
Safety shutout device	Yes	Yes	Yes
RPM / RCF conversion	NA	NA	Yes

Solely for JM-036HS:

- RPM / RCF convertible
- Rotors recognized program
- 4-digit rpm Display for more accurate
- Power stabilization function
- Optional for UPS

Sophisticated and User-Friendly design



JM-036



JM-036H



JM-036HS



Micro Haematocrit Centrifuge

Intended use:

This is “Class 1” medical device, providing a speed of 12000rpm to separate the red blood cells, and define the volume percentage PCV of Red Blood Cells against the whole body reflecting the status of Red Blood Cells in patients with normal and abnormal, including anemia (Red blood cells abnormally total low) and polycythemia (Red blood cells abnormally increased). The normal value of HCT for male is 40 – 54% and 38 – 47% for female. It is also tested for Jaundice and also microbe immunity genetics and general clinic test. Ideal for use in hospital, clinic and lab center.

Specification:

Model	JM-012E	JM-430B	JM-410E	JM-400
		JM-012B		
Dimension (W*D*H)	310 x 360 x 310mm	310 x 360 x 310mm	255 x 295 x 240 mm	260 x 280 x 240 mm
N. weight (kg)	15 kg	16 kg	11 kg	7 kg
Motor	Brush motor	Brush motor	Brush motor	Brush motor
Brake	Switch brake	Automatic brake	Switch or automatic	Switch brake
Max speed (±10%) Max RCF	12000rpm adjustable 14490xg	12000 ~ 13000rpm 14490~17005xg	F-2415: 12000~13000rpm 14490~17005xg	12000 ~ 13000rpm 14490~17005xg
Timer	Digital 99 min	Digital 99 min	Digital 99 min	Mechanical 60 min
Safety locking lid	Yes	Yes	Yes	Yes
Rotor with Lid	F-2415	F-2415	F-2415	F-2415
Capillary tube	24 capillary tube	24 capillary tube	24 capillary or micro tubes	24 capillary tube



JM-430B



JM-012E



JM-410E



F-2415
(Capillary x 24 tubes)



JM-400



JM-012B



JM-036
(See Page 3)



Reader for HCT
(Aluminm)



Dry Bath Incubators

Specification:

Catalog no.	JM-006E	JM-006E-150	JM-006	JM-005
	JM-006M			
Overall dimension	370 x 245 x 145mm	360 x 290 x 110mm	370 x 240 x 115mm	215 x 230 x 115mm
Net weight	5.5 kg	6.0 kg	4.5 kg	3 kg
Temp setting/Reading	Digital (3-digit)	Digital (3-digit)	Analog/Thermometer	Analog/Thermometer
Temp range	Ambient to 99.9°C	Ambient to 150°C	25 – 105°C	25 – 105°C
Temp accuracy	±0.1°C	±0.1°C	±0.2°C	±0.2°C
Uniformity (at 37°C)	±0.2°C	±0.2°C	±0.5°C	±0.5°C
Temp sensor	PT-100	K-Type	* NTC	* NTC
Temp control	PID	PID	PID	PID
Overheat alarm	Yes	Yes	No	No
Heating element	450W	450 W	450W	200W
Timer (with HOLD)	Digital 99 hr. 59 min	Digital 99hr. 59 min	No	No
Optional accessory	Transparent Lid	Transparent Lid	Transparent Lid	Transparent Lid

※ NTC : Negative Temperature Coefficient



JM-006E



JM-006E-150



JM-006M



JM-005



JM-006

Constant-Temp Water Bath

Specification:

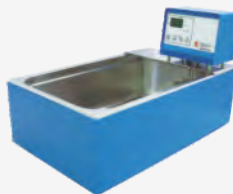
Model	JM-01	JM-04M	JM-010	JM-03S	JM-05
			JM-010E		
Bath Volume	22 L.	11 L.	22 & 11 L	22 L	5 L.
Overall dimension	59 x 40 x 26.5cm	39 x 33.5 x 36cm	59.5 x 39 x 45cm	59.5 x 39 x 45cm	40.5 x 20.5 x 31cm
Temp readout	Thermometer	Thermometer	LED digital	LED digital	Thermometer
Temp preset	N.A.	N.A.	N.A.	25°, 37°, 56°C	N.A.
Temperature set	Ambient~100°C	Ambient~100°C	Ambient~99.9°C	Ambient~99.9°C	Ambient~90°C
Uniformity (at 37°C)	±0.5°C	±0.5°C	±0.2°C	±0.2°C	±0.5°C
Water circulation	Stirrer	Stirrer	Stirrer	Stirrer	Stirrer
Temp control	Thermostat	Thermostat	PID	PID	Thermostat
Timer	N.A	N.A	YCW-010E only	N.A.	N.A
Over-heat shutdown	NO	NO	Yes	NO	NO
Heating element	1.0 KW	1.0 KW	1.0 KW	1.0 KW	500 W
Optional	Back-up battery Drain + Shelf	Back-up battery Drain + Shelf	Back-up battery Drain + Shelf	Back-up battery Drain + Shelf	Back-up battery Drain + Shelf

Bath dimension: 22 L: 50x29.5x15.5 cm; 11 L: 30x24x15cm

Optional accessories: Gable Lid, Test Tube Rack, Lid with Concentric Rings



ALL Stinless Steel



JM-010



JM-03S



JM-05



JM-01, JM-04M



JM-10E

Roller Mixers

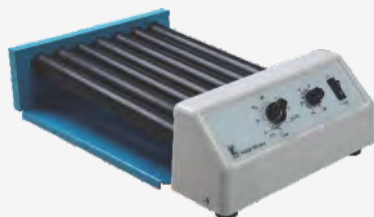
Specification:

Model	JM-370	JM-370 (B)
Overall dimension	295 x 440 x 130mm approx.	230 x 455 x 115mm approx.
Net weight	8 kg (13.2 Lb.) approx.	5 kg (11.0 Lb.)
Roller number	7 rollers	5 rollers
Roller size	32mm (Ø) x 320mm (L)	32mm (Ø) x 320mm (L)
Speed (Fix & adjustable)	Fix at 40rpm (±3rpm) or adjustable from 10 ~ 40 rpm.	Fix at 40rpm (±3rpm) or adjustable from 10 ~ 40rpm
Motor	Gear motor 24V, 5.17W	Gear motor 24V, 5.17W
Timer	Mechanical 180 min. + HOLD	Mechanical 180 min. + HOLD
Operation	2 modes for Continuous or timer activated Intermittent	2 modes for Continuous or Timer activated for intermittent
Rocking range	19mm diameter	19mm diameter
Max load	5 kg (11 Lb.)	5 kg (11 Lb.)
Current	110V/0.03A; 220V/0.012A	110V/0.03A; 220V/0.012A
Power source	110V, 220V, 50/60Hz	110V, 220V, 50/60Hz

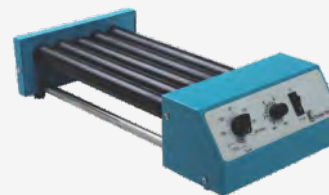
(Specifications are subject to change without advanced notice)

Loading Capacity

Tubes / Models	JM-370	JM-370 (B)
5ml	18 tubes	12 tubes
10ml, 15ml,	12 tubes	8 tubes
50ml	12 tubes	8 tubes



JM-370



JM-370 (B)

Class II A2 Biosafety Cabinet

Specifications:

Protect your personnel, products, and environment with our Class II A2 Biosafety Cabinet, designed for safety and ease of use.

Key Features:

- **Available Sizes:** Width:80cm or 120cm Depth:120cm Height: 200cm
- **HEPA Filter:** For air filtration and recirculation back into the cabin.
- **Image Display:** Shows device status and controls device operation.
- **Negative Pressure:** Prevents the spread of contamination.
- **UV Lamp:** For post-operation bacterial disinfection.
- **Glass Door Control:** Operated by foot pedal remote and digital panel.
- **Internal LED Lighting System.**
- **Gas Outlet Inside the Cabin.**
- **Internal Surfaces:** Constructed from high-quality, grade-one stainless steel.
- **Standard Compliance:** The device meets relevant standards.
- **Power System:** Operates on 180V to 230V.
- **Contamination Prevention:** Features an air curtain isolation design to prevent internal and external cross-contamination.
- **User-Friendly Design:**

The glass door can be moved up and down, positioned arbitrarily, is easy to operate, and can be completely closed for sterilization. It includes a positioning height limit alarm. Equipped with a waterproof power output socket and a sewage interface in the work area for operator convenience. Designed with a 10° inclination angle for ergonomic comfort.

• Integrated Safety:

A special filter at the exhaust controls emission pollution, ensuring the working environment remains free of pollution and leakage.

Features an LED LCD panel control and a built-in UV lamp protection device. The UV lamp operates only when the front window and fluorescent lamp are closed and includes a UV timing function.

• Durable Construction:

Constructed from high-quality stainless steel that is smooth, seamless, and without dead ends. Easily and thoroughly disinfected, and resistant to erosion from corrosive agents and disinfectants.





 www.spinreact.com

Spin 200E

System Function:

Automatic, discrete, random access,
Bench-top, STAT sample priority

Throughput: Constant 200 tests/hour, up to 330 tests/hour with ISE

Measuring principles: Absorbance photometry, Turbidimetry, Ion Selective Electrode technology

Methodology: End-point, Fixed-time, Kinetic, optional ISE single/dual reagent chemistries, monochromatic / bi-chromatic

Open system with user defined profiles and calculation

Reagent/Sample Handling:

Reagent/Sample tray: 40 positions for reagents and 40 positions for samples in 24-hour refrigerated compartment (2~12 °C)

Reagent volume: R1: 10~350µl, step by 1µl; R2: 10~200µl, step by 1µl

Sample volume: 2~45µl, step by 0.1µl. Primary tubes and different sample cups.

Reagent/Sample probe: Liquid level detection, vertical & horizontal collision protection and inventory checking, reagent pre-warming

Probe cleaning: Automatic washing for interior and exterior. Carry over < 0.1%

Automatic sample dilution: Pre-dilution and post-dilution

Control and Calibration:

Calibration mode: Linear (one point, two points and multi-points), Logit-Log 4P, Logit-Log 5P, spline, exponential, polynomial, parabola

Control rules: X-R, L-J, Westgard multi-rule, Cumulative sum check, twin plot

Working Conditions:

Power Supply: 200~240V, 50/60Hz, ≤1500W or 100~130V, 50/60Hz, ≤1500W

Temperature: 15-30 °C for operation

Humidity: 35-85% RH

Dimensions: 860mm(W)×700 mm(D)×625 mm

Weight: 130 kg

Cuvette Washing:

8-stage washing station with pre-warmed detergent and water




CLINICAL CHEMISTRY
SUBSTRATES

PRODUCT	METHOD	SIZE	REF
ALBUMIN	Bromocresol green colorimetric	2x250 mL	1001020
		1x1000 mL	1001022
		2x50 mL	1001023
AMMONIA ▲	Enzymatic - UV	1x60 mL / 8x5 mL	1001410
BILIRUBIN Total	DPD	1x240mL / 1x60mL	1001046
BILIRUBIN Direct	DPD	1x240mL / 1x60mL	1001047
BILIRUBIN T&D	Jendrassik - Gröf. Colorimetric	1x150 mL	1001041
BILIRUBIN Total	DMSO - Colorimetric	2x150 mL	1001042
BILIRUBIN Direct	DMSO - Colorimetric	2x150 mL	1001043
BILIRUBIN T&D	DMSO - Colorimetric	2x150 mL	1001044
CARBON DIOXIDE	Enzymatic	2x50 mL	1001430
CREATININE	Jaffé. Colorimetric-Kinetic	2x50 mL	1001110
		2x150 mL	1001111
		2x1000 mL	1001112
		4x250 mL	1001113
CREATININE	Trinder - Enzymatic	1x30 mL / 1x10 mL	1001115
		1x240 mL / 1x80 mL	1001117
FRUCTOSAMINE ●	NBT - Colorimetric	19x3 mL	1001158
GLUCOSE	Hexokinase. Enzymatic-UV	10x20 mL	1001200
		10x50 mL	1001201
GLUCOSE ▲	GOD-POD. Trinder	4x125 mL	1001190
		4x250 mL	1001191
		10x50 mL	1001192
GLUCOSE ▲	GOD-POD. Trinder	2x50 mL	41010
		2x250 mL	41011
		2x100 mL	41012
		1x1000 mL	41013


CLINICAL CHEMISTRY
SUBSTRATES

PRODUCT	METHOD	SIZE	REF
HOMOCYSTEIN	Enzymatic	1x30 mL / 1x5 mL	41057
LACTATE ▲	LO – POD. Enzymatic-Colorimetric	5x10 mL	1001330
TOTAL PROTEINS	Biuret. Colorimetric	2x50 mL	1001290
		2x250 mL	1001291
URINE & CSF TOTAL PROTEINS	Red Pyrogallol. Colormetric	2x50 mL	1001024
		2x150 mL	1001025
		2x50 mL	1001323
UREA 37°	o-Phtalaldehyde. 37°C. Colorimetric	2x250 mL	1001325
		2x100 mL	1001326
UREA B ●	Berthelot - Enzymatic-Colorimetric	10x50 mL	1001329
		4x150 mL	1001331
UREA UV ●	Urease-GLDH. Kinetic	10x20 mL	1001332
		10x50 mL	1001333
UREA UV	Urease-GLDH. Kinetic. UV (2 Reagents)	1x40 mL / 1x10 mL	41040
		1x240 mL / 1x60 mL	41041
		1x100 mL / 1x25 mL	41042
		1x480 mL / 1x120 mL	41043
URIC ACID ▲	Uricase-POD. Enz-Color	10x20 mL	1001010
		10x50 mL	1001011
		4x125 mL	1001012
		4x250 mL	1001013
URIC ACID	Uricase-POD. Enz-Color (2 Reagents)	2x50 mL	41000
		2x250 mL	41001
		2x100 mL	41002
		2x1000 mL	41003

CLINICAL CHEMISTRY

ELECTROLYTES

PRODUCT	METHOD	SIZE	REF
CALCIUM	o-Cresolphthalein. Colorimetric	2x150 mL	1001060
CALCIUM	o-Cresolphthalein. Colorimetric	2x50 mL	1001062
CALCIUM	o-Cresolphthalein. Colorimetric	2x150 mL	1001061
CALCIUM	Arsenazo III. Color	3x50 mL	1001065
CHLORIDE	Thiocyanate-Hg. Color	2x150 mL	1001360
COPPER	Color 3-5 Di Br-PAESA. Colorimetric	5x10 mL	1001080
IRON -HIERRO	Ferrozine. Colorimetric	4x50 mL	1001247
TIBC (Total Iron Binding Capacity)	Saturation-prec. Carbonate-Mg	100 Tests	1001241
MAGNESIUM	Xylidyl Blue. Color	2x50 mL	1001286
MAGNESIUM	Xylidyl Blue. Color	2x150 mL	1001285
PHOSPHORUS	Phosphomolybdate. UV	2x150 mL	1001155
POTASSIUM	TBP-Na Method. With precipitation	2x50 mL	1001390
POTASSIUM	Pyruvate Kinase	1x60ml / 1x15 ml	1001397
SODIUM	Mg-Uranylacetate. With precipitation	1x60 mL	1001380
SODIUM	ONPG	1x60ml / 1x30ml	1001387
ZINC	5 Br-PAPS - Colorimetric	5x10 mL	1001350




CLINICAL CHEMISTRY
LIPIDS

PRODUCT	METHOD	SIZE	REF
CHOLESTEROL ▲	CHOD-POD. Enzymatic-Colorimetric	10x50 mL	1001090
		10x20 mL	1001091
		4x125 mL	1001092
		4x250 mL	1001093
CHOLESTEROL	CHOD-POD. Enzymatic-Colorimetric	1x1000 mL	41019
		2x50 mL	41020
		2x250 mL	41021
		2x100 mL	41022
HDL	Precipitant Reagent	4x5 mL (200 tests)	1001095
HDLc-D	Direct. Enzymatic-Colorimetric	1x60 mL / 1x20 mL	1001096
		1x30 mL / 1x10 mL	1001097
		1x240 mL / 1x80 mL	1001098
LDLc-D	Direct. Enzymatic-Colorimetric	1x30 mL / 1x10 mL	41023
PHOSPHOLIPIDS ▲	Trinder. Enzymatic-colorimetric	5x10 mL	1001140
TOTAL BILE ACIDS	Enzymatic-Colorimetric	1x50 mL / 1x18 mL	1001030
TRIGLYCERIDES ▲	GPO-POD. Enz.-Color	5x10 mL	1001310
		10x20 mL	1001311
		10x50 mL	1001312
		4x125 mL	1001313
		4x250 mL	1001314
TRIGLYCERIDES	GPO-POD. Enz.-Color	1x50 mL	41030
		2x150 mL	41031
		1x100 mL	41032
		1x500 mL	41033
		1x1000 mL	41034


CLINICAL CHEMISTRY
ENZYMES

PRODUCT	METHOD	SIZE	REF
ACID PHOSPHATASE ●	Hillmann. Kinetic - Colorimetric	18x2 mL	1001121
		10x15 mL	1001122
ADA (Adenosine Deaminase)	Colorimetric - Kinetic	1x40 mL / 1x20 mL	1001070
ALKALINE PHOSPHATASE ●	DGKC. Kinetic optimized	20x3 mL	1001130
		10x15 mL	1001131
		10x50 mL	1001132
ALKALINE PHOSPHATASE · <i>FOSFATASA ALCALINA</i>	DGKC. Kinetic optimized (2 Reagents)	1x60 mL / 1x15 mL	41240
		1x240 mL / 1x60 mL	41242
ALKALINE PHOSPHATASE	IFCC. Kinetic optimized (AMP buffer)	1x60 mL / 1x15 mL	41245
		1x240 mL / 1x60 mL	41246
AMYLASE	CNP3 - Kinetic	20x2 mL	41201
		2x60 mL	41202
ACE · <i>ECA</i>	Enzymatic	2x50 mL	41205
CHOLINESTERASE · <i>COLINESTERASA</i> ●	Butyrylthiocholine. Kinetic-colorimetric	20x3 mL	1001100
CHOLINESTERASE · <i>COLINESTERASA</i> ▲	Butyrylthiocholine. Kinetic- colorimetric (2 Reagents)	4x50 mL / 4x3 mL	1001102
CHOLINESTERASE · <i>COLINESTERASA</i>	Butyrylthiocholine. Kinetic-colorimetric	1x100 mL / 1x20 mL	41210
CHOLINESTERASE DIBUCAINE · <i>COLINESTERASA DIBUCAÍNA</i>	Inhibitor. Kinetic-colorimetric	1x5 mL	1001101
CK-MB ●	Anti CK-M. Immunoinhibition. Kinetic-UV	6x2.5 mL	1001054
		19x2.5 mL	1001055
CK-MB	Anti CK-M. Immunoinhibition. Kinetic-UV	1x60 mL / 1x15 mL	41254
CK-NAC ●	NAC Kinetic-UV	20x2.5 mL	1001050
CK-NAC	NAC Kinetic-UV	1x60 mL / 1x15 mL	41250
G-6-PDH ▲	Enzymatic - UV	1x100 mL / 1x20 mL	1001420




CLINICAL CHEMISTRY
ENZYMES

PRODUCT	METHOD	SIZE	REF
GOT / AST ●	IFCC. Enzymatic - UV	20x2 mL	1001160
		10x15 mL	1001161
		10x50 mL	1001162
GOT / AST	IFCC. Enzymatic - UV	1x60 mL / 1x15 mL	41270
		1x240 mL / 1x60 mL	41272
		1x480 mL / 1x120 mL	41273
GPT / ALT ●	IFCC. Enzymatic - UV	20x2 mL	1001170
		10x15 mL	1001171
		10x50 mL	1001172
GPT / ALT	IFCC. Enzymatic - UV	1x60 mL / 1x15 mL	41280
		1x240 mL / 1x60 mL	41282
		20x2 mL	1001185
γ-GT ●	Carboxy substrate. Kinetic	10x15 mL	1001186
		10x50 mL	1001187
		1x60 mL / 1x15 mL	41290
γ-GT	Carboxy substrate. Kinetic	1x240 mL / 1x60 mL	41292
		1x480 mL / 1x120 mL	41293
		LDH ●	DGKC. Pyruvate - Kinetic - UV
HDL	DGKC. Pyruvate - Kinetic - UV	1x60 mL / 1x15 mL	41220
		1x240 / 1x60 mL	41222
LIPASE -LQ	Enzymatic. Kinetic-Colorimetric	2x10 mL / 1x4 mL	1001274
		4x10 mL / 1x8 mL	1001275


CLINICAL CHEMISTRY
CALIBRATORS & CONTROLS

PRODUCT	METHOD	SIZE	REF
SPINTROL CALIBRATOR ▲	Human serum / Suero humano	10x3 mL	1002011
		4x3 mL	1002012
		1x3 mL	1002013
SPINCHEM 1	Human serum / Suero humano	4x5 mL	1002015
SPINCHEM 2	Human serum / Suero humano	4x5 mL	1002025
SPINTROL NORMAL ▲	Human serum / Suero humano	4x5 mL	1002120
		1x5 mL	1002121
SPINTROL PATHOLOGICAL ▲	Human serum / Suero humano	4x5 mL	1002210
		1x5 mL	1002211
AMMONIA / EtOH	Human serum / Suero humano	4x2 mL	1002240
ANGIOTENSINE COVERING ENZYME (ACE)	Calibrator	1x1 mL	1002225
	Control	2x1 mL	1002227
ADA (Adenosine Deaminase)	Calibrator	1x1 mL	1002230
	Control	1x1 mL	1002232
BILIRUBIN ▲	Total Calibrator (20 mg/dL)	4x1 mL	1002250
CK-NAC / CK-MB ▲	Calibratorl. Human source. 4 x Level 1	4x2 mL	1002260
	Control. Human source. 2 x Level 1 / 2 x Level 2	4x2 mL	1002262
G-6-PDH	Control	4x0,5 mL (2 Levels)	1002520
HEMOGLOBIN	Calibrator	1x1 mL	1001232
HOMOCYSTEIN	Calibrator	2x3 mL	1002276
	Control	3x1,5 mL	1002281
HDL/LDL ▲	Calibrator	4x1 mL	33903
LIPIDS ▲	Control Serum. Human source	4x1 mL	1002480
TBA ▲	Calibrator	1x5 mL	1002290
TBA/ CO₂ ▲	Control	1x5 mL (1 Level)	1002292



 Serology

RHEUMATOID SERODIAGNOSTIC

PRODUCT	METHOD	SIZE	REF
ASO LATEX	Slide agglutination	50 Tests	1200101
		100 Tests	1200102
		200 Tests	1200105
CRP LATEX	Slide agglutination	50 Tests	1200301
		100 Tests	1200302
		200 Tests	1200305
RF LATEX	Slide agglutination	50 Tests	1200201
		100 Tests	1200202
		200 Tests	1200205
WAALER ROSE	Slide agglutination	50 Tests	1200501
		100 Tests	1200502

SYPHILIS SERODIAGNOSTIC

PRODUCT	METHOD	SIZE	REF
RPR CARBON	Slide agglutination	150 Tests	1200401
		500 Tests	1200402
VDRL (Stabilized monoreagent)	Slide agglutination	1500 Tests	1200405
		250 Tests	1200406
TPHA	Microplate agglutination	100 Tests	1200408

 Serology

REAGENT ONLY PRESENTATIONS

PRODUCT	METHOD	SIZE	REF
ASO LATEX	Slide agglutination. Reagent only	1x5 mL (100T)	23103
	Slide agglutination. Control (+)	1x1 mL	23107
CRP LATEX	Slide agglutination. Only reagent	1x5 mL (100T)	23113
	Slide agglutination. Control (+)	1x1 mL	23114
RF LATEX	Slide agglutination. Only reagent	1x5 mL (100T)	23123
	Slide agglutination. Control (+)	1x1 mL	23124
RPR CARBON	Slide agglutination. Only reagent	1x5 mL (100T)	23133
	Slide agglutination. Control (+)	1x1 mL	23132





EDAN

 www.edan.com.cn

i15 Blood Gas and Chemistry Analyzer



LAN/Wi-Fi connectivity



Build-in Printer and USB Storage



Specification

Throughput	Results in 1 minute after sample aspiration
Sample volume	140 μ l / 80 μ l
Quality control	3 or 5 levels QC, External electronic simulator
Display	7-inch color LCD Display, 800*480
Interface	4 x USB 2.0 host, 1 x RS232, WLAN
Input device	Touch screen and barcode scanner
Power supply	100~240VAC, 50/60Hz
Battery	5000mAh rechargeable lithium-ion battery, 50 samples continuous testing
Dimensions (W*H*D)	315*238*153 mm
Weight	3.65 KG (include battery)
Operation Environment	10 $^{\circ}$ C-31 $^{\circ}$ C; %RH: 25%-80%; 57-106.6 KPa

i20 Blood Gas and Chemistry Analysis System

- Blood Gases
- Electrolytes
- Metabolites
- Co-oximetry



LAN/Wi-Fi connectivity



Build-in Printer and USB Storage

Specifications

Test Principle	Optical Fluorescence
Throughput	Results in 60s after sample aspiration
Sample volume	65uL / 95uL
Battery	6800mAh
Display	10.1 inch color touch screen, 1280*800
Dimensions(L*W*H)	245*270*290 mm
Weight	< 5 Kg
Operation Environment	10°C-30°C; %RH: 25%-80%; 57-106.6 KPa

Variety of test Cartridges

	iBG10-OXI*	iBG10*	iBG8-OXI	iBG8	iBC4	iBG4	iBG3
pH	—	—	—	—		—	—
pCO ₂	—	—	—	—		—	—
pO ₂	—	—	—	—		—	—
Na ⁺	—	—	—	—	—		
K ⁺	—	—	—	—	—		
Cl ⁺	—	—	—	—	—		
Ca ⁺	—	—	—	—	—		
Lac*	—	—					
Glu*	—	—					
tHb	—	—	—	—		—	
sO ₂	—		—				
FO ₂ Hb	—		—				
FHHb	—		—				
FCO ₂ Hb	—		—				
FMetHb	—		—				

Calculated parameters: cH⁺,pH(std), HCO₃(act), HCO₃(std), tCO₂, BE(ecf), BE(act), BE(B), BB(B), ctO₂, P50, sO₂(est), Cä(7.4), AnGap, Hct(est), pO₂(A-a), pO₂(a/A), RI, pO₂/FIO₂, cH+(T), pH(T), pCO₂(T), pO₂(T), pO₂(A-a)(T), pO₂(a/A)(T), RI(T), pO₂(T)/FIO₂, mOsm

*coming soon

Parameter	Reportable Range	Resolution	Measurement method
pH (pH units)	6.5 – 8.0	0.001	Potentiometric sensor
pO ₂ (mmHg)	10 – 700	0.1	Amperometric sensor
pCO ₂ (mmHg)	10 – 150	0.1	Potentiometric sensor
Na (mmol/L)	100 – 180	0.1	Potentiometric sensor
K (mmol/L)	2.0 – 9.0	0.01	Potentiometric sensor
Ca (mmol/L)	0.25 – 2.5	0.01	Potentiometric sensor
Cl (mmol/L)	65 – 140	0.1	Potentiometric sensor
Glu (mg/dL or mmol/L)	20 – 700/1.1 – 38.9	1/0.1	Amperometric sensor
Lac (mg/dL or mmol/L)	2.7 – 180.2/0.3 – 20	0.1/0.01	Amperometric sensor
Hct (%PCV or Fraction)	10 – 75 /0.10 – 0.75	1%/0.01	Conductance sensor

 *On·Call*[®]

 www.aconlabs.com

On-Call[®] Plus Code Free

Blood Glucose Monitoring System

Delivers Value and Quality



On-Call® Plus

Code Free



Feature	Specification
Technology	Biosensor/Electrochemical, Glucose oxidase (GOD)
Result Calibration	Plasma-equivalent
Test Time	10 seconds
Sample Size	0.5 uL
Sample Type	Fresh capillary whole blood
Hematocrit Range	25 - 60%
Glucose Test Range	20 - 600 mg/dL (1.1 - 33.3 mmol/L)
Memory Storage	300 results with date and time
Test Averaging	7, 14, 30-day averages
Data Transfer	USB
Control Solution	3 levels
Audio Feature	Optional beep for sample detection, error messages
Automatic Shutoff	2 minutes after last action
Battery	One (1) CR 2032 3.OV coin cell battery
Battery Life	1,000 measurements
Operating Conditions	41 - 113 °F (5 - 45°C) and 10 - 90% relative humidity
Strip Storage Temperature	2-35°C
Expiration Date	24 months (6 months after first opening)



Mission® Plus

Hb Hemoglobin Testing System

Advantage

Quick

Hemoglobin (Hb) and Hematocrit (Hct) results in < 15 seconds

Simply insert strip, apply specimen and read results

Low maintenance and quick clean up

Accurate

Precise results equivalent to automatic hematology analyzers

Wide Hb measurement range of 4.0-25.6 g/dL with Hct range of 13-75%

- Excellent precision in both low and high Hb concentration

Convenient

Only 10 µL capillary or venous blood required

Single-use dry strips allow for convenient shipping and storage

Memory stores up to 1,000 results

Quick data transfer via Mini USB port



✓ CE
US★
510(k) Cleared for device format only

Myr

 www.myr.com.es

Modular Tissue Embedding Center

EC 350

For Paraffin Blocks



Technical Data Embedding Center EC 350

Dispensing Console EC 350-1

Dimensions (w x d x h)

Console 595 x 650 x 430 mm

Removable Trays 262 x 175 x 55 mm

Weight 27,8 kg

Capacity

Paraffin reservoir 5 l

Left/Right chamber 1,7 l

190 cassettes

400 moulds

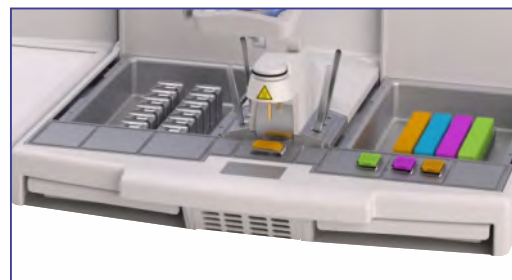
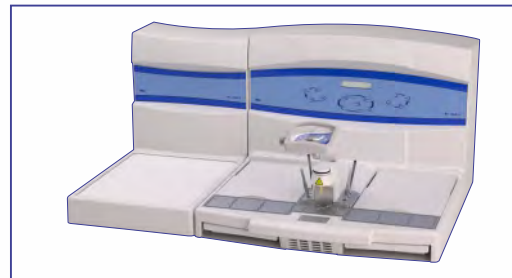
Power Requirements

version 1	version 2	
Nominal voltage	100-120 V	220-240 V
Networks frequency	50/60 Hz	
Power Consumption	7,5 A	3,6 A

Temperature settings

Paraffin reservoir, left/
right chamber, heated
area, forceps receptacle
from 40°C to 70°C

Electrically heated
forceps
from 60°C to 75°C
(optional)



MICROTOMES

M-240 and M-250

The M-240 and M-250 microtome's use state-of-the-art technology and embody the company's commitment to quality and excellence in the microtomy. It provides the operational convenience and stability required for outstanding



Full-colour TFT 7" display with PCAD (projected capacitive) touchscreen. The size and tilt of the display allow an easy and effortless selection of the parameters and increased user safety. All required parameters and functions are available on the main screen.

The Cut at its Finest

M-240



M-250



SPECIFICATIONS

Section thickness

Total range in (μ)	0,5 - 100	0,5 - 100
Thickness settings in (μ)	0,5 - 5 in increments of 0,5 5 - 20 in increments of 1 20 - 60 in increments of 5 60 - 100 in increments of 10	0,5 - 5 in increments of 0,5 5 - 20 in increments of 1 20 - 60 in increments of 5 60 - 100 in increments of 10

Trimming

Total range in (μ)	1 - 600	1 - 600
Thickness settings in (μ)	1 - 10 in increments of 1 10 - 20 in increments of 2 20 - 50 in increments of 5 50 - 100 in increments of 10 100 - 600 in increments of 50	1 - 10 in increments of 1 10 - 20 in increments of 2 20 - 50 in increments of 5 50 - 100 in increments of 10 100 - 600 in increments of 50

Specimen feed (mm)	28 \pm 1mm	28 \pm 1mm
---------------------------	--------------	--------------

Vertical stroke (mm)	72 \pm 1mm for sectioning of mega-cassettes	72 \pm 1mm for sectioning of mega-cassettes
-----------------------------	---	---

User interface	7" capacitive touchscreen display	7" capacitive touchscreen display
-----------------------	-----------------------------------	-----------------------------------

Operating modes	Manual: Rotational and Rocking	Manual: Rotational and Rocking Motorized: Interval, Single, Continuous and Multi Stroke
------------------------	--------------------------------	--

Spin Tissue Processor STP 120



Tissue processing is a technique that uses alcohols to remove water from tissues and replace it with a medium that allows sectioning of tissue. Several methods are used to achieve this. **Myr** fulfills it **Spin Tissue Processor STP 120** in a patented and unique technique that combines several movements for the tissue to achieve perfect infiltration results. This is possible thanks to the world's best spin processing method.

Technical Data Spin Tissue Processor STP 120

Power requirements

Nominal voltage	100 - 120 V	220-240 V AC (± 10%)
Network's frequency	50/60 Hz	
Consumption	400 VA	
Fuses	115 V (2xT4A)	230 V (2xT2A)
Battery Nickel-Cadmium	12 V 600 mA	

Programming

Number of programs	10 (selectable)
Infiltration time per station	from 1 m to 90 h 59 m
Rotational agitation	selectable
Shaking	selectable
Centrifuging time	selectable
Program start delay	selectable without time limit

Capacity

Reagent stations

Number of vessels	10 (9 if 3 paraffin baths are used)
Volume per vessel	1,8 l

Paraffin stations

Number	2 (optionally 3)
Volume	1,8 l
Nominal voltage	24 V AC
Nominal power per station	100 VA
Temperature setting range	45 - 70 °C in 1°C increments
Overtemperature release	75 °C (± 4 °C)

Cassette baskets

Number of baskets	1 (optionally 2)
Basket capacity	120 cassettes (optionally 240)

Dimensions

Diameter	850 mm
Height	500 - 700 mm
Diameter of the roller's circle	670 mm

Weight

Including packaging	130 kg
Net (fully equipped)	70 kg

Optional equipment

- Spiral support for a second cassette basket (double processing capacity)
- Additional basket
- Additional paraffin bath (necessary when operating the processor with the two baskets)
- Fume extraction system with active charcoal filter





Asia Pharma
آسیا فارما

Experience a healthy life

○ **Kabul:** 2nd Floor, Shafagh Market, In Front of Parwan Hotel, Heseye 3 Khairkhana

✉ k.sales@asiapharma.af

☎ +93 793 15 16 16

☎ +93 793 15 16 20

○ **Herat:** 1st floor, Ibn-e- Sina Market, Eidgah St, Herat, Afghanistan

✉ info@asiapharma.af

☎ +93 797 50 40 30

○ **Kandahar:** 2nd floor, Ayubi Shafa Market, Shah Zaman Khan Wat, Nowi Sarak

✉ kandahar@asiapharma.af

☎ +93 799 085000

☎ +93 707 085000

○ **Mazar-e-Sharif:** 3rd Floor, Aria Market, Ghazanfar Cross Road, Darwazeye Balkh

✉ m.admin@asiapharma.af

☎ +93 793 15 16 01

☎ +93 797 98 41 41