

Catalog 2021

Asia Pharma Medical Equipment



Asia Pharma
آسیا فارما

Experience a healthy life



www.asiapharma.af info@asiapharma.af



Asia Pharma
آسيا فارما

Experience a healthy life

Asia Pharma Medical Equipment



Company Overview:

Our story started in 2002. Our country teems with hardworking, vigorous people that are determined to make with all of our customers to support the health of Afghanistan and provide for the development and advancement of Afghanistan. Asia Pharma Ltd was founded during a time of challenge and hardship, when health services and access to good jobs were not available. Our company was committed to making a change and providing for the betterment of humankind.

Asia Pharma Ltd. began business as a single branch, selling imported products. Today, the company has grown from one small store into a network of stores and branches all over Afghanistan and abroad. Currently Asia Pharma Ltd. has over 400 employees and we proudly stand for a good and healthy community and continue to work together to make for a healthy Afghanistan. Today, we provide the tools and resources to benefit our community and our customers around the region.

One of the most important department of Asia Pharma is Medical and Laboratory Equipment Department. In this department, the high quality products from the international companies such as Siemens Healthineers Edan, Snibe, Riele, Jasmic, iband, Sonoscape, etc. legally and exclusively import and distribute all over Afghanistan. After-sales services are always available for customers of the company. Almost all kinds of electric medical equipment repaired in the company by our professional staff. Service section staff has been trained in China and all kinds of Laboratory machineries and other medical equipment are being completely and professionally repaired with guarantee.

Our Mission:

Our mission is to provide high quality medical products and services to our customers and help the development of Afghanistan by providing employment and increasing capacity of domestic quality productions.

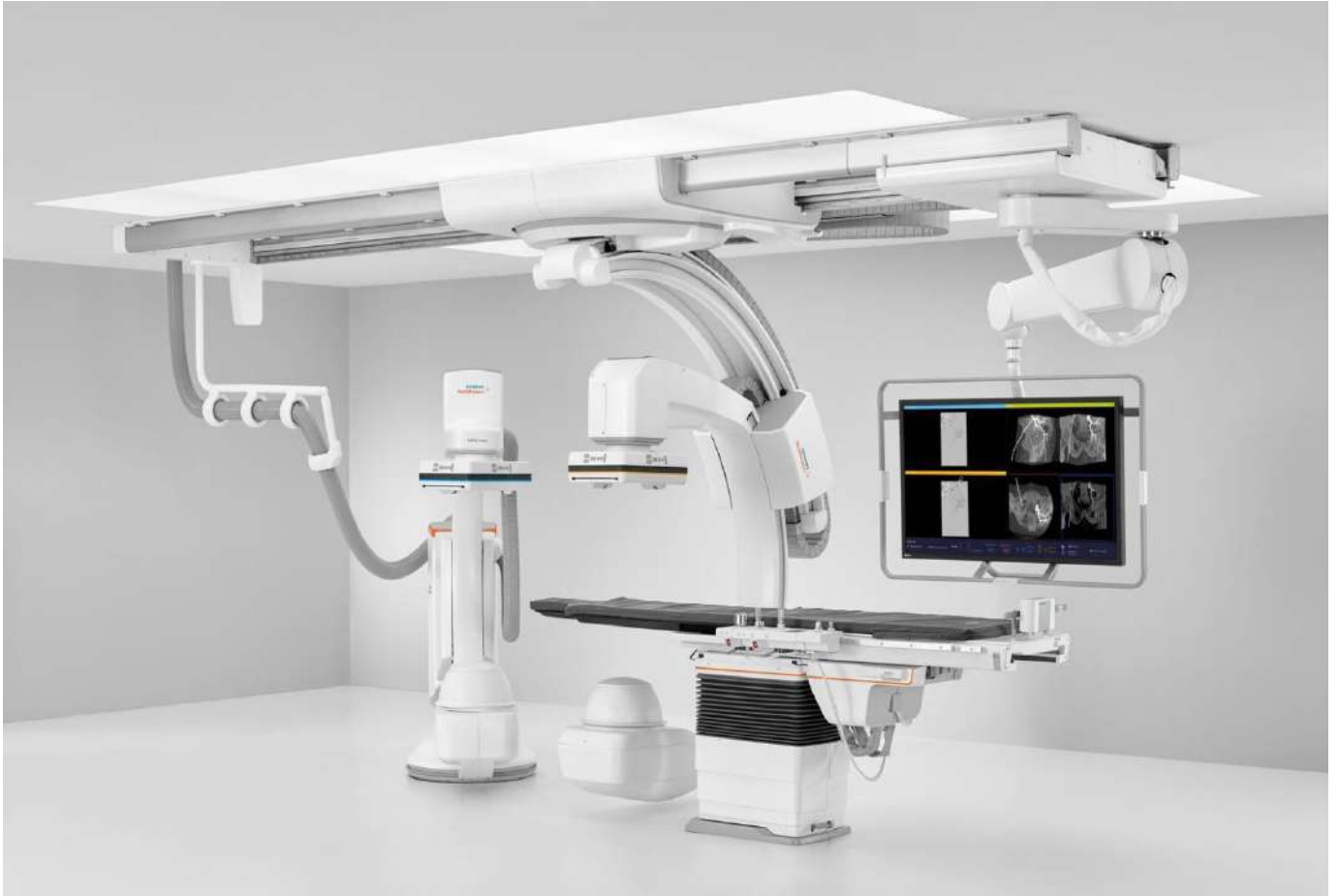
Our Vision:

Asia Pharma's vision is to help the people of Afghanistan experience a healthy life by providing high-quality products and services both locally and internationally with honesty, knowledge and trust in our relationships with our customers.



Functions:

- ARTIS icono biplane is the ideal solution for a wide range of disciplines and procedures. Neuro procedures – and particularly stroke treatment – benefit from revolutionized cone beam CT image quality with syngo DynaCT Sine Spin and syngo DynaCT Multiphase depicting 8 perfusion phases. Lateral Plane Switch enables multidisciplinary usage between cardiologists and radiologists without compromises. With full body (165 cm) lateral plane coverage, there's no need to compromise during abdominal procedures either.



■ Computed Tomography

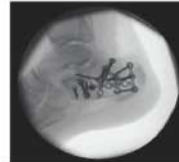
■ Magnetic Resonance

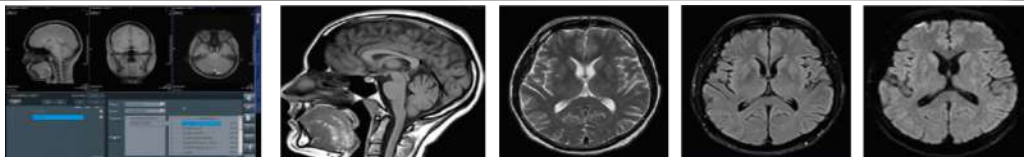
■ Molecular Imaging

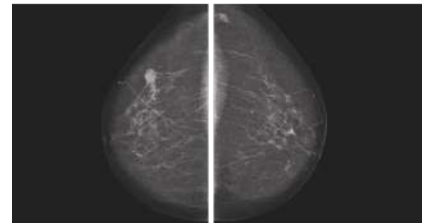
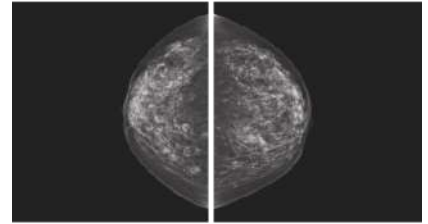
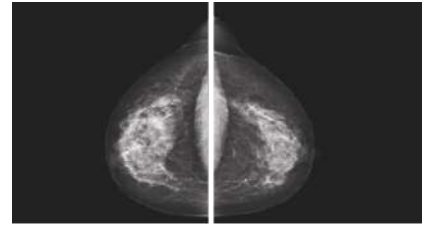


- Twin Robotic X-ray
- Radiography
- Mobile X-ray
- Fluoroscopy
- Urology







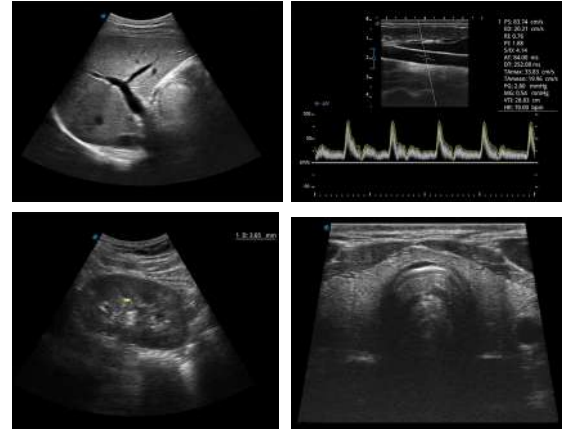


SonoScape



Small Size, Smart Sight

E1, as a new hand carried BW ultrasound model, is equipped with complete functions which enhance its competitiveness among entry level ultrasound models. It not only provides satisfying image quality but also brings users smooth workflow experience.



Efficient Diagnosis:

- μ -Scan, Speckle Reduction & Edge Enhancement
- Spatial Compound Imaging
- PIH - Pulse Inversion Harmonic
- Wide Scan - Enlarge Image Area
- Chroma - Highlight Image Details
- B Steer for Linear Probe
- PW Doppler

Ergonomics Designs:

- 2 Transducer Ports
- Light Weight and Compact
- 15.6 inch Anti-flickering HD LED Screen
- Tilting Monitor Angle Adjustment
- Backlit Keyboard and Intelligent Panel
- Long-lasting Battery for 90mins

Optional Accessories:

- Height Adjustable Trolley
- Durable, Carry-on Site Suitcase

Ease of Use:

- Quick Boot Up
- Auto Brightness Adjustment
- Auto Image Optimized
- Auto IMT

Equipped Accessories:

- Wi-Fi and Bluetooth Available
- DICOM
- 500GB Hard Disk

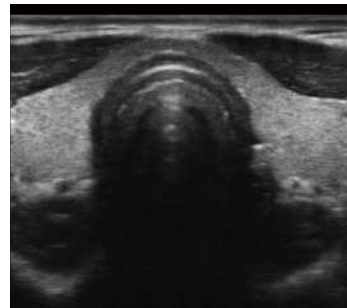
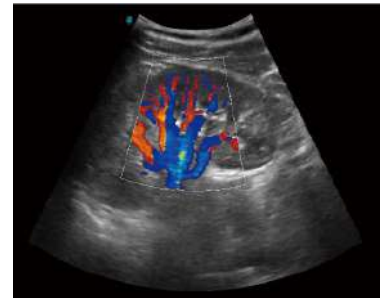
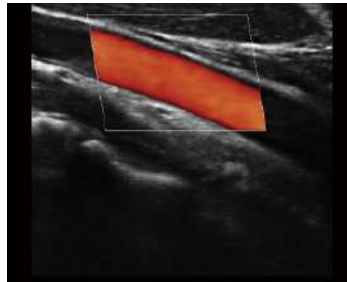


Continuing the legacy of SonoScape A8 ultrasound machine has been designed to be a great value B/W cart-based system. The Sonoscape A8 ultrasound system offers It has great performance at an affordable price. The 15" LCD monitor with articulated arm and high configuration makes the A8 sonoscape ultrasound machine an outstanding system in the B/W ultrasound market. Standard three sockets are freely available for fifteen transducer choices, supporting a wide range of clinical applications.



- High-definition 15-inch LCD monitor with articulated arm.
- Compact and agile trolley design.
- Standard three transducer Sockets.
- Fifteen available transducer choices.
- Support a wide range of applications: general, radiology, OB/GYN, urology, pediatric, MSK (Musculoskeletal), Shared Services, etc.
- 180 degree HD endocavity probe with temperature-detection technology.
- Intuitive operation with M-Tuning one-key image optimization.
- Clip-board function for quick patient image capture and review.
- Full patient database solutions: DICOM3.0, AVI/JPG, USB2.0, 160GHDD, PDF report, etc.

Always looking to improve our products and to bring you the medical solutions you need, SonoScape has developed a new probe and function for the E1 Exp. With these additions the E1 Exp will bring users a more efficient examination experience with satisfying image quality and a smooth workflow.



Efficient Diagnosis:

- μ -Scan, Speckle Reduction & Edge Enhancement
- Spatial Compound Imaging
- PIH - Pure Inversion Harmonic
- Wide Scan - Enlarged Image Area
- Tissue Specific Imaging
- SR Flow

Ergonomic Designs:

- Up to 2 Transducer Ports
- Light Weight and Compact
- 15.6 inch Anti-flickering HD LED Screen
- Tilting Monitor Angle Adjustment
- Backlit Keyboard and Intelligent Panel
- Long-lasting Battery for 90 mins

Ease of Use:

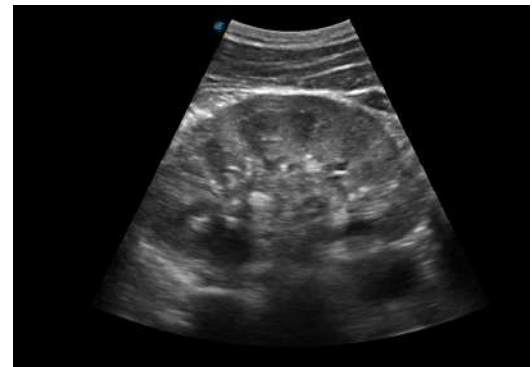
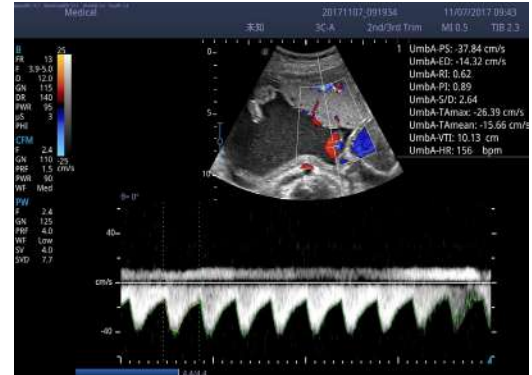
- Quick Boot Up
- Auto Brightness Adjustment
- Auto Image Optimization
- Auto IMT
- Auto Trace

Equipped Accessories:

- Wi-Fi and Bluetooth Available
- DICOM
- 500GB Hard Disk

Exactly to Your Needs

E2 is a color Doppler ultrasound system that reaches beyond your expectations due to its compact and fashionable appearance. It fulfills GI, OB/GYN, Cardiac and POC applications to fit your routine scanning needs while its color mode will help you for more accurate and efficient diagnosis of lesions. E2 provides wide range of applications to assist users for routine scanning. E2 provides automatic calculations to enhance your diagnostic confidence and save you time for patient communication.



Auto Image Optimization:

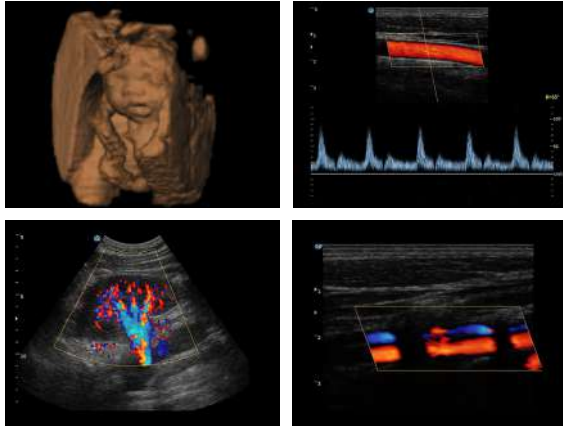
With the press of a button the image is automatically adjusted and optimized, saving you time with parameter adjustments. Additionally, with Auto Focus on, the focus area follows the depth of the ROI box as it is moved in the scanning field, providing users an excellent image quality in the desired area of interested.

Automated Calculation:

Auto IMT is used when determining the level of vascular sclerosis present in the patient by automatically tracing the thickness of the carotid vessels. Auto trace provides users sensitive and accurate wave tracing, avoiding error of manual trace and giving out calculation result in no time

Discovering Your Outstanding Value

The S2 is SonoScape's smart portable color Doppler system. The S2 brings more value to sonographers than any other in its class. S2 is catered to the needs of doctors with features such as, intelligent patient file management system, convenient user-definable settings, and professional diagnostic applications. Working with the S2, you can have comfort, accuracy and confidence. The S2 is configured with comprehensive functions, including complete scanning modes, such as outstanding 2D performance, sensitive blood flow, and 3D/4D imaging technology. The S2 is endowed with the best functions in its class! The scanning modes include B /2B/4B/M/ Steer M/Color/DPI/PW/ CW.



Advanced Imaging Technology and Broad Range of Clinical Applications
 The advance technologies used in the S2 make it easy to get accurate results. Tissue Harmonic Imaging, μ -Scan Speckle Reduction, Compound Imaging, Panoramic imaging, Trapezoid imaging, Freehand 3D and 4D imaging will fulfill your needs anytime anywhere.

General Applications: Abdomen, Obstetrics, Gynecology, Small parts, Musculoskeletal, Rheumatology, Vascular, Urology, Cardiology etc. Post-measurement and calculation software packages will allow you to focus on what you want. Provides professional reports from different exams for comparison.

Outstanding Value and Whole Capabilities

The S6 is a multi-functional hand carried Color Doppler ultrasound system which can be widely used in clinical practices. SonoScape developed this system to satisfy a variety of clinical requirements such as Radiology, Cardiology, OB/GYN, vascular and small parts. With the help of powerful software packages, professional transducers, a built-in battery and other user-friendly designs, the S6 makes it possible for doctors to serve patients anywhere and anytime without compromise.

Convenience:

- 15 inch LCD monitor
- One button image optimization: M-Tuning
- Intuitive interface and user-friendly control panel
- Lightweight, built-in Li-ion battery supports continuous scanning for more than one hour without power supply

Emerging Applications:

- Biopsy guide
- Supporting emergency, ICU/CCU, and anesthesia applications.
- Imaging technologies in the S6 provide amazing imaging quality in both near and far fields.
- S6 is compatible with SonoScape's high frequency linear transducer



Emerging Applications:

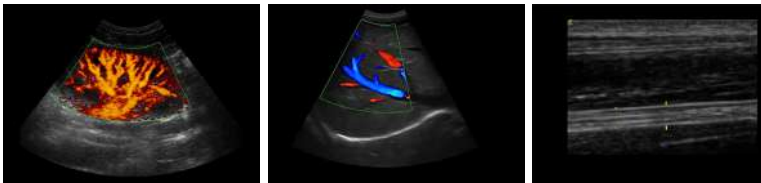
- Biopsy guide
- Supporting emergency, ICU/CCU, and anesthesia

Urology:

- High quality Trans-rectal transducers and Biplane transducers

Radiology:

- Professional services for 2B, 4B, CFM, DPI and PW.
- Panoramic imaging.
- A wide range of transducers.



OB/GYN:

- Freehand 3D imaging;
- 135 degrees wide range trans-vaginal transducer with temperature detection
- Professional and abundant OB/GYN measurement software

Feel the Difference

Since releasing its first portable color Doppler ultrasound system, SonoScape has dedicated itself to the ultrasound field. From this dedication, a great deal of ultrasound technologies, especially in hand-carried systems have emerged. From this dedication, the S9 was released as a powerful and versatile imaging platform with a futuristic design. Compact, yet featuring comprehensive applications for cardiology, radiology, abdomen, obstetrics, gynecology, small parts and urology, S9 provides the best solution for ultrasound imaging through outstanding performance.

Spatial Compound Imaging:

Spatial Compound Imaging utilizes several lines of sight for optimal contrast resolution, speckle reduction and border detection, with which the S9 is ideal for superficial and abdominal imaging for better clarity and improved continuity of structures.

Pulse Inversion Harmonic Imaging:

The harmonic signals are fully preserved without degradation of the acoustic information, which makes it possible for the S9 to image high-level details and improve contrast resolution by reducing noise and clutter in the visualization of subtle lesions, small parts, vascular and so on.

C-Xlasto elastography:

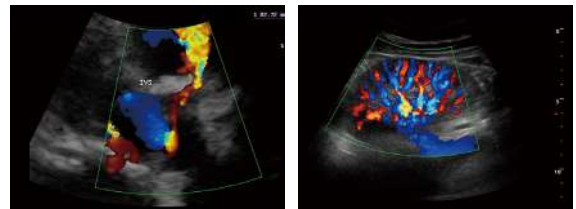
SonoScape provides the S9 with a new method to support the physician in assessing tissue elasticity. The differences in tissue responses are detected and visualized in real-time by the elastography algorithms through different graphical representations which can be particularly helpful in analyzing breast, thyroid and musculoskeletal structures. on.

Real-time 3D (4D)

With increased physical channels and a new platform, the S9 offers both high quality imaging and high frame rates to meet a new standard of SonoScape's S series. Thanks to high frame rate and advanced technologies, the 4D imaging of S9 delivers smooth movement of the fetus and offers comprehensive 4D acquisition, data rendering, and post-processing functionality.

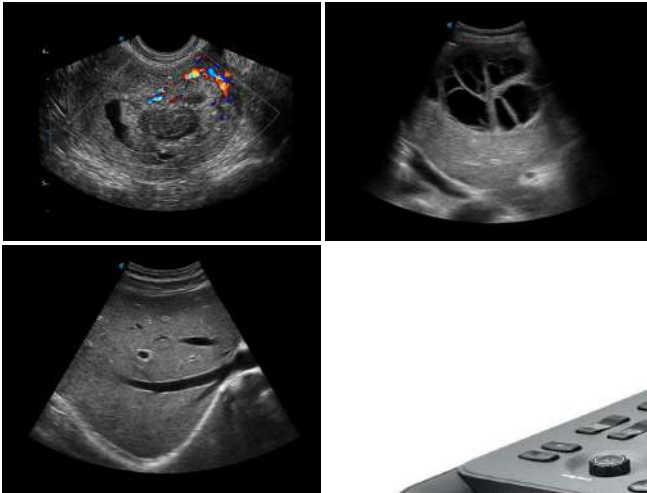
High Density Probe:

S9 is equipped with a high density phased array probe to meet the needs of both high frame rate and premium resolution in cardiac imaging. Thanks to the high sensitivity of SonoScape's color Doppler mapping, the S9 can provide an accurate cardiac diagnosis beyond your imagination.



Small Size, Smart Sight

Revolutionizing ultrasound scanning, the hand-carried color Doppler system X3 is equipped with advanced technology to present you with excellent image quality. Taking into account the various situations you may find yourself in, the X3 is extremely light weight and small with a laptop design providing you with an experience of extreme mobility and flexibility during any situation. X3, offers a wide range of transducers to fit your every need for clinical applications, and its professional exam modes will bring renewed confidence in your examinations.



Various Accessories:

- Comfortable backpack and travelling case
- Extended connector for up to 3 probes
- Wi-Fi and Bluetooth wireless connection
- HDMI

Ultimate Flexibility:

- Laptop size and light weight
- Magnalium-alloy body with 15.6 inch monitor
- 180 degree folding angle
- Anti-reflective screen and auto brightness adjustment
- Integrated trolley with height adjustment
- Noiseless system
- Quick boot up

Advanced Technology:

- The new platform provides users a more efficient scanning process, due to its advanced technology.
- The X3's image quality gives users a clear view of lesions, which enable users to improve diagnosis accuracy and save scanning time.
- Dynamic Multi-beam processing technology
- Spatial compound imaging
- μ-Scan Image processing technology
- Pure Inversion harmonic imaging

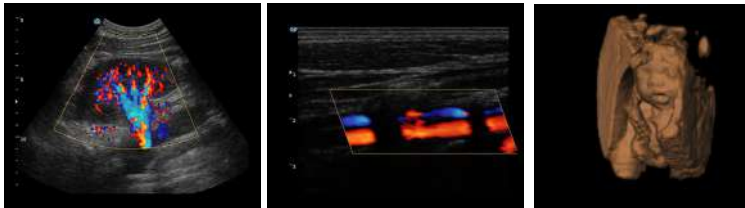
A Value Choice beyond Your Expectation

SonoScape's trolley color Doppler system S11 redefines price and performance with practical design. The S11 will go beyond your expectations but not your budget. As an easy-to use ultrasound system, the S11 is integrated with a new software platform, especially optimized for a smooth workflow and convenient operation. The system speeds up the exam process and makes file management easier.

- 15-inch high definition LCD monitor with articulating arm
- Compact and agile trolley design
- 3 active transducer sockets available for a wide range of applications
- Duplex, Color Doppler, DPI, PW Doppler, tissue harmonic imaging, μ -scan speckle reduction imaging, compound imaging, trapezoidal imaging
- Customized settings based on your own working style
- Full patient database and image management solutions

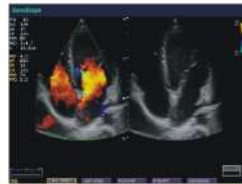
Various Diagnostic Applications:

The S11 ultrasound can be used in all general applications, including Abdomen, Obstetrics, Gynecology, Small parts, Muscle-skeletal, rheumatology, Vascular, Urology, Cardiology etc. Access to a wide range of compatible transducers, including, Convex, Micro-convex, Transvaginal, Transrectal, Linear, Intraoperative, Phased array, 4D Volumetric transducers etc.





S20, the newest color Doppler system from SonoScape, is specially designed for full ultrasound applications, including Radiology, Cardiovascular, OB/GYN and others. This system is featured with innovative ergonomic design, latest ultrasound technology and powerful workflow. As a workflow enhanced ultrasound systems, S20, combining 17" monitor with smart touch panel together, will provide the most smoothly work flow which doctors have never experienced before. The high definition image quality is another strength for S20. Thanks to the innovative technologies, such as Multi-beam processing and μ -scan, the doctors will be confident for even toughest patients. So, from technology to imaging, from archiving to reporting, the S20's innovation will bring all the best for clinical practice in everyday.



Cardiac Flow



Kidney Flow



Early OB



Thyroid Flow



Mitral Valve



CCA in PW Doppler

- 17 high definition LCD monitor with large imaging area
- smart touch screen
- Four transducer sockets for a wide range of transducers: Convex, Phased, Linear, Transvaginal, Transrectal, Bi-plane, TEE, Endoscopic, Intraoperative, 4D
- High density transducers with frequency range from 1.9 to 15 MHz
- 200°transvaginal imaging with Temperature-detection technology
- Integrated with state-of-the-art technologies, like μ -scan, multiple-beam processing, IMT, B-Steer, automatic flow volume analysis
- Application: General, Radiology, Cardiology, OB/GYN, Urology, Vascular
- Full patient database solutions: DICOM3.0, AVI/JPG, USB2.0, HDD, DVD, PDF report

Excellent Performance Everyday

SonoScape's S30 is a powerful and versatile general imaging system that helps to meet a wide variety of general imaging needs. The sleek console slips easily into tight spaces, yet is packed with powerful technology that delivers excellent diagnostic images with quality, speed and precision.

Technologies:

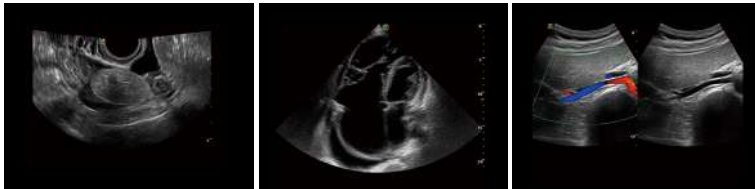
Innovative new PIH filters suppress noise in the signal to boost contrast resolution throughout the images, displaying highly improved 2D, color flow and spectral Doppler images.

The second-generation u-Scan technology greatly improves the visibility of organs and lesions with improved, high-definition contrast resolution that suppresses speckle artifact while maintaining real tissue architecture.

Panoramic Imaging and trapezoidal imaging expand your field of view providing in the B-mode.

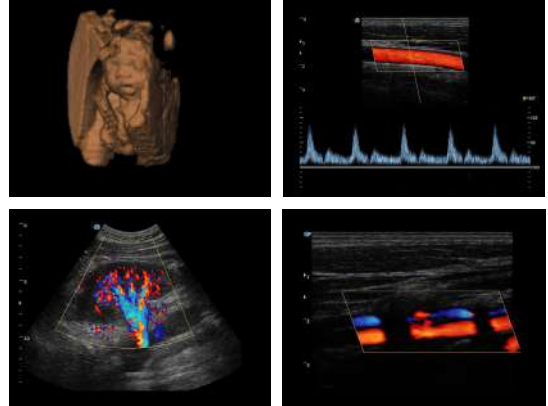
Information and anatomical references of large organs and masses for ease of measurement and diagnostic efficiency.

SonoScape provides the S30 with compression C-Xlasto elastography to support assessment of tissue elasticity. The differences in tissue response are detected and visualized in real-time through different graphical representations, which can be particularly helpful in analyzing breast, thyroid and musculoskeletal structures.



Style and Performance

Through years of continuous innovation, development, and by giving priority to our customers' requirements. Based on the revolutionary platform, combining SonoScape's core imaging technologies and sleek ergonomic design, S40 elevates the image performance to a record level and satisfies even the most demanding clinical requirements, significantly expanding the value of ultrasound.



Spatial Compound Imaging:

Spatial Compound Imaging utilizes several lines of sight for optimal contrast resolution, speckle reduction and border detection, with which S40 is ideal for superficial and abdominal imaging with better clarity and improved continuity of structures.

Pulse Inversion Harmonic Imaging:

The harmonic signals are fully preserved without degradation of the acoustic information, which makes it possible for S40 to image high-level details and improve contrast resolution by reducing noise and clutter in the visualizing of subtle lesions, small parts, vascular and so on.

μ -Scan:

μ -Scan uses real-time image processing algorithm to eliminate speckle and noise artifacts, enhancing tissue margins and borders by correcting discontinuity between different regions, allowing improved visualization of real tissue information.

Auto-Adaptive Imaging Processing:

It can automatically adapt the acoustic velocity in different regions to improve the resolution and contrast.

Reveal the Invisible

carries a comprehensive, upgraded platform, to become an epoch-making Adhering to its great image quality, SonoScape's newly released S50 4D functions and intelligent workflow, which greatly helps ultrasound system. It is equipped with powerful single crystal transducers, remarkable is a good balanced design, internally to meet a wide variety of general imaging needs. Outfitted with extraordinary software and hardware, S50 .and externally. The quick response touch screen, mode switching and storage operations deliver a new standard with clarity and flexibility



Clarity through improved uniformity and sensitivity:

- SonoScape's S50 is equipped with a wide band single crystal probe for abdominal and cardiac scanning, which can greatly improve signal to noise ratio, and acquire stunning images with better resolution and richer imaging detail. Compared with a conventional transducer, a single crystal probe has significantly improved acoustic energy conversion capacity, which means the probe has better performance as well as a longer working life
- The design of S50 took operational use into consideration, creating a comfortable diagnosing environment. Ergonomic design, excellent man-machine interaction and rapid response, makes S50 an intelligent scanning assistant for you, bringing improved efficiency and helping to prevent fatigue from multiple examinations.
- SonoScape's new transvaginal probe for gynecological is breaking the mold and expanding elastography applications to non-linear probes.
- C-xlasto Imaging
- By understanding that tissue stiffness varies depending on the type of tissue, we can use this to easily find abnormalities and tumors within soft tissue. When applying consistent and repeated pressure with the transducer on soft tissue the system can quickly calculate the Strain Ratio of the region and give an Intelligent Strain Curve for a recording of applied pressure to assist with diagnosis of the abnormality. Predominately used only with linear probes, SonoScape's new transvaginal probe for gynecological is breaking the mold and expanding elastography applications to non-linear probes.

Color Doppler Diagnostic Ultrasound







adopts the intelligent Wis+ platform to help ultrasound professionals acquire and interpret ultrasound The SonoScape S60 images more efficiently and precisely. It is a premium system that keeps your practice at the forefront of ultra

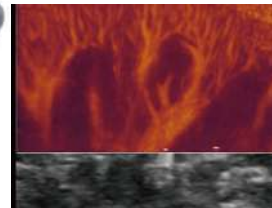
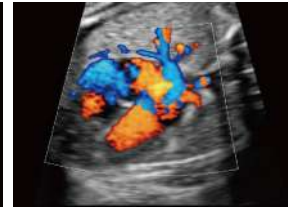


INSPIRED DESIGN:

Improved User Experience

S60 is crafted for optimal user experience by taking ergonomics and unhindered workflow into consideration. Clinically tailored tools are designed to alleviate your fatigue from busy schedules.

-  Wireless Wi-Fi Connection
-  Height Adjustment
-  Sono-help Tutorials
-  Gel Warmer
-  Bluetooth Remote Control
-  13.3" Quick Responsive Touch Screen

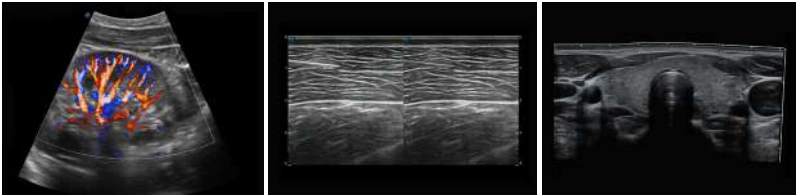


- Wis+
- S-Fetus
- Contrast-Enhanced
Ultrasound
- Smart 3D/4D
- Sono-Synch

Ultrasound Solutions with Flexibility

color Doppler ultrasound system is a new generation product from SonoScape. It is designed to give high quality images, The P10 rich probe configurations, various clinical tools and automatic analysis software to provide you with comprehensive solutions for your growing demand for clinical applications

- B + Compound
- μ -Scan
- P10 offers a comprehensive selection of electronic probes to maximize its capabilities to meet a wide range of applications including abdomen, pediatric, OB/ GYN, cardiovascular, musculoskeletal, etc. The advanced probe technologies also effectively enhance the image quality and confidence in reaching clinical diagnoses, even in difficult patients.
- Convex Probe 3C-A
- Linear Probe L741
- Phase Array Probe 3P-A
- Intracavitary Probe 6V1



Value and Significance

Incorporating innovative technologies, P20's user-friendly designed with a simple operation panel, intuitive user interface and a variety of intelligent auxiliary scanning tools, will significantly improve your daily examination experience. Besides general imaging applications, P20 has entitled with diagnostic 4D technology which has an extraordinary performance in obstetrics and gynecology applications.

- Super Wide-bandwidth Platform
- Spatial Compound Imaging
- μ -Scan+
- Dynamic Color
- C-xlasto Imaging
- Real-time Color Panoramic
- Anatomic M Mode
- Tissue Doppler Imaging
- S-Live
- S-Depth
- Pelvic Floor 4D
- C-xlasto Imaging for Gynecology
- Auto EF
- Auto IMT
- Auto NT
- Auto Face
- AVC Follicle
- Auto Color



Define Your Vision

Easily accomplish more with SonoScape's new P50 ultrasound system. Incorporating single crystal clarity, automatic corrections and calculation, and user defined flexibility promises a confident diagnostic experience as well as opening new doors of opportunity for ultrasound use.



Powerful Compact Precision:

Taking into consideration the evolving expectations and needs for ultrasound, the P50 is a slim and unobtrusive trolley system that is comfortable in tight, congested spaces with little room to work in. Providing everything you need for a comfortable examination in a small space for both you and your patient.

- 

Solution for Radiology
- 

Solution for OB/GYN
- 

Solution for Cardiology

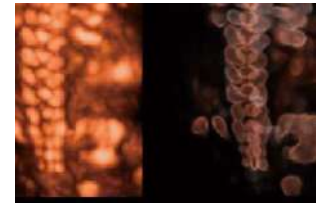
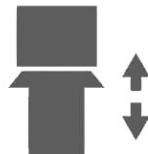
Single Crystal Transducer

Piezoelectric Ceramic Single Crystal Acoustic Probe

μ-Scan+

Dynamic Color

Tissue Noise Color



A Brighter Way to Image Clarity

Innovation rewrites the standard. The HD-350 is a High Definition Image Processor for endoscopy systems. It is designed specifically to answer to your request on high image quality, with an excellent budget friendliness.

Smart workflow:

To increase efficiency, patient data management is accessible with the press of a button. The smart workflow of HD-350's 500G built-in workstation helps doctors to edit reports, record videos and manage patient files with ease.

Versatile image processing:

The CMOS sensor enables multistage enhancements in color, edge and structure to display sharp GI image through internal processing, providing you with the details you require in procedures.

High Definition:

Advanced High Definition technology enables high-quality endoscopic images – bringing the whole market the same HD quality found at the most premium hospitals.



A Brighter Way to Image Clarity

The one-stop, cost effective, High Definition Video Endoscopy System just got better. SonoScape's HD-550 Processor has evolved in many ways, excelling in a variety of routine and complex procedures

Brilliant workflow :

HD-550 inherits the built-in workstation with 500GB of hard disk. It allows you to access patient data, to capture and record images and videos, to create and edit reports in one spot without the need of any extra software.

More versatile with the new multi-mode VIST (Variable Intelligent Staining Technology)
VIST multi-mode is interchangeable at the touch of a button, without any delay you can notice.

A clear vision with Full HD output
Armed with a 2-megapixel CMOS sensor, HD-550 supports 1080p resolution.



Digital Sony BW Printer UP-897MD

پرینتر التراسوند (سونی)

Functions:

- Ideal for ultrasound printing
- Smaller and lighter by 12% compared to the 895 series printer
- User friendly controls on front panel
- Fast print speed - approximately 2.0 seconds
- Space Saving Design
- Worldwide Power Supply
- 3 Media Choices - UPP-110HG, UPP-110HD or UPP-110S/5





EDAN



The DUS 60 is an impressive new compact ultrasound system, providing superb value and the best quality across the entire range of applications, with enhanced support of PW imaging to meet the higher diagnostic requirements.

Functions:

- Multi-purpose for abdomen, OB, GYN, Urology, Small parts and biopsy
- Digital Beam former
- Two transducer connectors
- Multi-frequency transducer series, fulfill different applications
- Maximum frequency up to 10MHz
- 12.1Inch LCD monitor
- USB ports support storage, transferring and printing
- THI (Tissue Harmonic Imaging)
- TSI (Tissue Specific Imaging)
- PW imaging
- Lithium rechargeable battery



Functions:

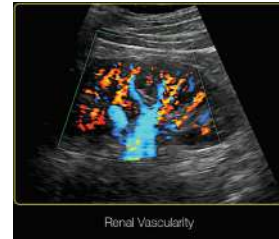
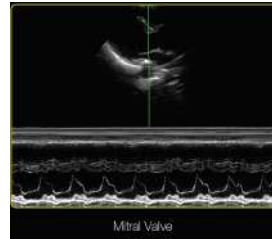
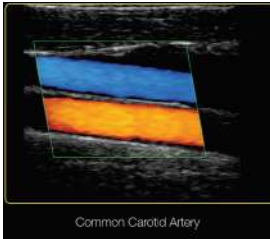
- 256-frame cine loop memory
- 504MB built-in image storage
- IP (Image Processing) function
- Backlit keyboard
- DICOM 3.0 (optional)



With its compact design, user-friendly operation and advanced imaging technologies, the U60 diagnostic ultrasound system offers a broad range of clinical applications to address all of your imaging needs.

Functions:

- The U60 provides excellent detail, contrast resolution and image uniformity without
- sacrificing penetration. Excellent color and Doppler sensitivity easily detects small,
- low flow vessels.
- Common Carotid Artery
- Mitral Valve
- Interscalene Brachial Plexus Umbilical Artery
- Renal Vasculature
- Right Hepatic Vein
- Compact Design
- Compact, lightweight design facilitates mobility
- Integrated battery enables operation anywhere
- Large 15" monitor for easy viewing
- Advanced Imaging Technologies
- Tissue Harmonic Imaging
- Spatial Compounding Imaging
- Speckle Reduction Imaging
- User-Friendly Operation
- Backlit, easy-to-use control panel
- Customizable user defined controls
- Comprehensive Clinical Applications
- Full set of transducers to support all applications
- Large capacity



The SE-1200 Express ECG provides excellent analysis while being cost-effective for private practices and hospitals. Physicians agree this ECG is easy to use with both a user-friendly design and exceptional clinical accuracy.

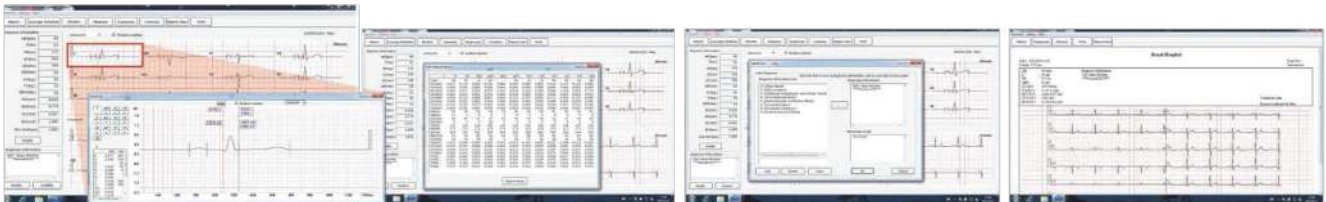
Functions:

- Extended printing
- Large internal memory which can be enlarged by USB flash disk
- Built-in data management with reports review
- LAN/Wi-Fi(optional) connections
- Bi-directional communication with SE-1515 Data Management System
- Multi-format reports export (optional)
- Barcode scanner support (optional)
- Data transmission to PC via Ethernet or serial port



Functions:

- 8high resolution color touch screen
- Alphanumeric keyboard
- One-touch operation
- Enhanced weak signal detection
- Comprehensive filters & anti-noise technology
- Real-time ECG waveforms freezing and review
- Advanced SEMIP algorithm for automatic measurements and interpretation
- Built-in high resolution thermal printer with external USB printer (optional) support



Functions:

- 12-channel digital recording
- Auto 12-channel identification (only SE-2012)
- OLED Screen with real-time waveform display
- Lightweight & Compact design: only 50 g
- Up to 8 days recording with one battery
- IP27 level of Waterproof & Dustproof
- Pacemaker detection
- Adjustable sampling rates



Functions:

- 3-channel digital recording
- OLED Screen with real-time waveform display
- Lightweight & Compact design: only 50 g
- Up to 8 days recording with one battery
- IP27 level of Waterproof & Dustproof
- Pacemaker detection
- Adjustable sampling rates



Functions:

- Powerful software with comprehensive functions
- 9/12/15/16/18-lead ECG configurable
- DE15/DE18 sampling box with convenient sampling button and signal quality indicator
- Multi-user Permission Configuration
- Enhanced powerful technical specifications provides reliable signal quality
- Lead reversal function to easily rectify wrong placement of electrodes
- Auto arrhythmia detection highlights the arrhythmia part on ECG traces automatically
- Event marker enables you to take notes anytime during sampling
- Feature description offers you more confidence for the diagnosis conclusion
- Reports comparison provides you an easy way of comparing ECG traces



Functions:

- Foldable color screen
- Backup memory for seamless monitoring
- Built-in long life thermal printer
- Compatible with 150/152 mm thermal recording paper
- Large numeric and graphic display for ease of readability
- FHR signal quality indicator
- Signals Overlap Verification to separate twins FHR
- Fast printing of stored traces
- Long life Li-ion battery guarantees the mobility of F3
- PC management software and central monitoring system supportive
- Convenient probe rack and compact design
- USB port enables memory expansion
- DECG & IUP parameters optional



F6 Express is a high end hospital grade monitor designed for multi-bed units with central station yet simple enough for private practice, it offers the most advanced integrated monitoring for the delivery room in big hospital; private obstetrician's office; antepartum clinic. F6 Express are designed for use in moving situation covers the entire continuum of antepartum and intrapartum applications.

Functions:

- Basic parameters: FHR, TOCO, Event Mark, AFM
- Optional Dual FHR monitoring
- Optional Internal parameters: IUP/DECG
- 24 hours waveforms playback
- Optional Built-in wireless module
- 150/152mm wide paper printing
- Support American/International standard
- 1,2,3 cm/min real-time printing speeds
- Quick printing for stored waveform
- Lithium battery for 4 hours continuous working
- 10.2 – inch high resolution color folding up LCD screen
- Probe rack and wall mounting rack
- Handle for easy carry
- Optional Fetal Stimulators
- Multi-crystal pulse wave Doppler waterproof transducer for FHR detection
- Signals Overlap Verification
- Monitor maternal parameters ECG, HR/PR, NIBP, SpO2, TEMP



- Main Unit with 12.1 Color TFT LCD Display, Probe Rack, FHR
- F9 is high-end fetal & maternal monitor, it offers the most advanced integrated monitoring for the delivery room in big hospital?private obstetrician's office?antepartum clinic. F9, designed for moving situations, covers the entire continuum of antepartum, intrapartum postpartum

Features:

- Basic parameters: FHR, TOCO, Event Mark, AFM
- Internal parameters: IUP, DECG (optional)
- 24 hours waveforms playback
- Optional Built-in wireless module
- Software for data transmission to PC
- 150/152mm wide paper
- Support US/International standard paper
- 1,2,3 cm/min real-time printing speeds
- Quick printing for stored waveform
- Lithium battery for 4 hours continuous working
- 12.1 – inch high-resolution color folding up LCD touch-screen
- Probe rack and wall mounting rack
- Handle for easy carry
- Optional Fetal Stimulator
- 12 – crystal pulse wave Doppler water-proof transducer for FHR detection
- Signal Overlap Verification
- Maternal parameters: MCEG, NIBP, MSpO2 are available



SD3 Series Ultrasonic Pocket Doppler

Product Introduction:

- SD3
- With excellent sensitivity, complete interchangeability and high durability, SD3 series Ultrasonic Pocket Doppler are ideal for routine fetal heart rate detection by the clinicians.
- Plug-and-play
- Compact design with easy one-hand operation
- Bright OLED screen with real-time FHR display
- 2 MHz probe with deep penetration for later pregnancy and larger patients
- 3 MHz probe detects fetal heart beat as early as 9 weeks
- Automatic power-off while putting the probe back to the rack (SD3 PLUS & SD3 PRO)
- Real-time monitoring for daily use
- Record & play with audio playback and numeric display
- Normal AA batteries for easy replacements
- Built-in Li-ion rechargeable battery ensures long working time



SD3 LITE

Interchangeable waterproof probes, alkaline battery

SD3

Interchangeable waterproof probes, OLED display, alkaline battery

SD3 PLUS

Interchangeable waterproof probes, OLED display, built-in rechargeable battery

SD3 PRO

Interchangeable waterproof probes, OLED display, audio recorder, built-in rechargeable battery



SD3 VASCULAR



SD3 LITE



SD3



SD3 PLUS



SD3 PRO

Features:

- LCD display with backlight control
- Dual working modes: monitoring & spot check
- Numeric display with plethysmogram display
- Trend review and pulse-tone modulation (Pitch Tone)
- IP22 waterproof & dustproof
- Nellcor OxiMax™M inside (H100N only)
- Adjustable audio and visual alarms
- Powerful data storage capacity (up to 300 hours)
- PatientCare Viewer software for PC data management
- Convenient AA size batteries for up to 48 hours of work
- Optional battery charger stand
- Automatic power-off function for power saving

Measuring Parameters (H100B):

- SpO2, PR

Measuring Parameters (H100N):

- Nellcor SpO2, PR, TEMP



Fingertip Pulse Oximeter

پلس اکسیمتر های فنگر (انگشتی)

Features:

- Med-Ox Fingertip Pulse Oximeter is the perfect oxygen saturation and heart rate monitoring device to assist in your doctor advised exercise program. Operation is simple and efficient.
- Provides you with security in knowing when to increase your litre flow. Nail polish tolerant.
- Comes in attractive retail box. 2 Year Limited Warranty
- Prescription required.
- Two AAA batteries can be continuously operated for 30 hours.



Functions:

- High resolution color TFT-LCD screen
- Pacemaker detection
- Defibrillation and electrosurgical interference protection
- Pitch tone (Pulse-tone modulation)
- Unique iSEAPTM algorithm which is specially optimized for arrhythmia patients
- iMATTM SpO2 algorithm with outstanding motion resistance
- and low perfusion resistance performance
- SP10 Validated NIBP
- Built-in rechargeable Li-ion battery
- Nurse call
- VGA output (optional)
- Suitable for adult, pediatric and neonatal patients

The iM8 series put reliable monitoring technologies at your finger tips. With their accurate readings and optimized performance, the iM8 series can meet basic monitoring needs, bringing easy access to high-quality healthcare for



Standard Parameters:

3/5-lead ECG, RESP, EDAN SpO2, NIBP, PR, 2-TEMP

Optional:

2-IBP, Respironics CO2, EDAN G2 CO2, Thermal Recorder, WLAN Accessory Kit



3/5-lead ECG Analysis



OxyCRG for Neonate



Large Font



Trend Screen

X12

Features:

• Based on its expandability of monitoring parameters, and stunning ultra-slim design, the X12 fulfills your primary clinical requirements in various scenarios, including Emergency Rooms, General Wards, Rehabilitation Department, Cardiac Units, and In-hospital Transfer, covering all patient types, realizing from neonatal to adult monitoring.



ECG:

Customizable 6-lead placement for more ECG waves. Automatic lead type detection. Industry leading iSEAPTTM algorithm with auto-detection of 33 types of arrhythmias. SEMIP[®] algorithm with 208 ECG findings over age/gender diversities.

NIBP:

Dual dust filter design makes no blockage inside and provides accurate NIBP readings. Unique cleaning mode for routine maintenance. iCUFSTM algorithm with smart deflation technology.

SpO2:

iMATM algorithm with outstanding motion resistance and low perfusion resistance performance. Reference reading of Perfusion Index (PI) from 0 to 10 according to perfusion changes. Simultaneous measurements of SpO2 and NIBP of the same limb.



Built-in Non-volatile Memory:
A single piece of patient data contains:

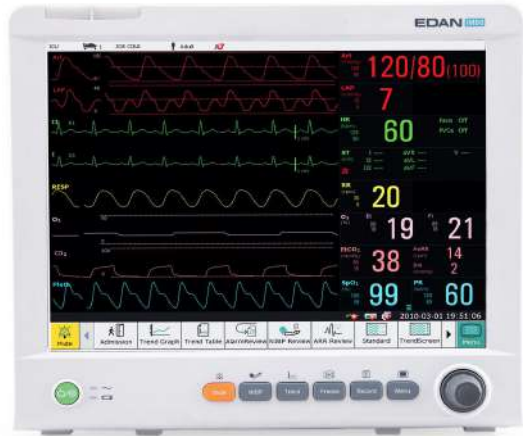


IM80

The iM8 series put reliable monitoring technologies at your finger tips. With their accurate readings and optimized performance, the iM8 series can meet basic monitoring needs, bringing easy access to high-quality healthcare for everyone.

Functions:

- 15" high resolution color TFT display with maximum 13 waveforms
- Full touch-screen enables intuitive operation by clicking on the specific parameters or the waveform in real time, standard configuration includes the navigation knob
- Pacemaker detection, electrosurgical interference proof
- Defibrillation protection and defibrillation synchronization
- SD card slot enables memory extension for large data storage
- USB and serial ports enables abundant future upgrades
- VGA output and Analog output
- OxyCRG available to judge the respiration and circulation function for neonates
- Large font display
- Arrhythmia and S-T segment analysis
- Built-in rechargeable Li-ion (up to 6 hours)
- Nurse Call function and bi-directional communication with MFM-CMS central station
- Built-in rechargeable Li-ion (up to 6 hours)
- Nurse Call function and bi-directional communication with MFM-CMS central station



Standard Parameters:

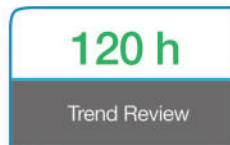
3/5-lead ECG, RESP, EDAN SpO2, NIBP, PR, 2-TEMP

Optional:

2-IBP, Respironics CO2, EDAN G2 CO2, Thermal Recorder, WLAN Accessory Kit

Built-in Non-volatile Memory:

A single piece of patient data contains:



(elite V8/V6/V5)

Features:

- Always Connected
- A transport monitor iM20 is available, connecting data across different applications, delivering an uninterrupted monitoring during patient transfer.
- Always Accurate
- The proprietary technologies and algorithms that comprise the foundation of the elite V series are scientifically validated and optimized, including iSEAPTM ECG monitoring algorithm with 33 types of arrhythmia detections, SEMIP® ECG diagnosis algorithm with 208 findings, iMATTM SpO2 algorithm, iCUFSTM NIBP algorithm, and G2 CO2 technology.
- Always Ready
- To provide comprehensive cares in high acuity applications, the elite V series can expand many advanced technologies and external devices/systems.



PRO-M12D

Features:

- Patented in-house design, elegant appearance
- Steady 12.1 inch monitor, suitable for bedside and transferring
- Simple user-friendly menu, preferable for both regular LCD and touchscreen
- Unique one-key-switching for maximum 7 display interfaces
- Pre-install Plug-and-Play EtCO2 socket, simpler upgrade for ICU application
- Waterproof case in strict accordance with IPX1 on CE regulation
- Wide application for adult, pediatric and neonatal

Standard:

- ECG, NIBP, SpO2, RESP, TEMP, PR/HR

Optional:

- EtCO2, 2-IBP, 2-TEMP, Recorder, Touch Screen, Central Monitoring System, Wall mount, Trolley



Features:

- The iM3 boasts customizable monitoring technology with SpO2, EDAN NIBP, and PR standard, with options for Nellcor SpO2, SunTech NIBP, Oral temp, or Infrared Ear temp parameters.
- Designed to make daily use more efficient, it has an 8-inch, high-resolution, ultra-thin touch screen for optimal viewing. With a lightweight and portable design, built-in barcode scanner, Wi-Fi capabilities, cable receiving design, and large internal memory the iM3 is Edan's most advanced vital signs monitor yet.
- The iM3 vital signs monitor allows for spot checks, continuous monitoring, and introduces the new round mode. Users can enter new or previous patients into one group, take measurements of a single patient, save the data to an overall summary report for the ward, and then move onto the next bed. Patients can be color coded depending on their status or scored using the MEWS, EWS, and NEWS systems.
- For spot checks and round mode the unit can record and display real-time vitals with storage for 16 million measurements. The monitoring mode includes an accurate alarm system, up to 1200 NIBP measurements per patient, and 120 hours of trend review. Data can be transferred to the CMS software via WiFi or USB, or downloaded to an EMR system directly.



Features:

- Clinical Adaptability
- Flexible parameter combinations
- Trend table and trend graphs
- Monitoring/Spot mode
- Auto/Manual/Continuous/Average BP mode
- Medical Record Management
- Built-in/External Memory
- Barcode scanner support
- Wired/Wireless connections
- Capabilities to connect to the MFM-CMS
- Mounting Solutions
- A full set of mounting solutions are provided.



Features:

- Two tables and two tubes X-ray machine is separate and special, with fluoroscopy, gastrointestinal photography, general photography, filter-ray photography.
- Three parameters kV mA and s are sectional interlocked protection in capacity
- Both fluoroscopy and photography are equipment with limited time protection fittings.
- Equipment with protection of the manostat for filament of X-ray tube, Space charge compensating, Rotary anode starting and overrunning-temperature protection
- Supply power V, fluoroscopy kV, photography kV and motor adjusts continuously.
- Equipment with the electric diagnostic bed, fluorescent photography device and electromagnetism locks
- The photography table can be used professionally, operated expediently, the ground-track is selected fittings when using.



Features:

- All portable dental X-ray sets are provided with a remote controller
- Digital display of time of exposure
- Controlled by a 40-bit microprocessor with a measure of precision of 0.01s
- Films for both luminous room and dark room and RVG digital mode option
- Intellectual self-check of the circuit of the complete machine
- The dosage of the principal ray is only 1mA
- X-ray leakage is only 0.001mR/h, which is almost a thousand times lower than the national compulsive standard Medical Diagnostic X-ray Protection Standards. Operator will not be subject to the hurt of X-ray without any protection.

Technical Parameter:

Tube Current:36kVTube Voltage:1.5mAX-ray Bulb Focus:0.3mmX-ray Bulb: D-081Power: 250AVGross Weight: 55KG



Features:

- It is used to diagnose early mamma pathological changes
- Using the Mo. target X-ray tube can show the pathological changes details.
- A nipple areola cuticles fat galactophore canals glandular tissue connective tissue and blood vessels can be seen in the picture.
- It has high correctness for distinguishing benign tumor and malignant tumor.
- It can be moved to sickroom to photograph beside bed.
- The unit can also be used to find foreign matters in human body to do nondestructive inspection of right metal and nonmetal materials.

Main technical parameter:

- Current 30 mA
- Voltage 34 kVp
- Time: 2 s
- Power supply Voltage: 180-240V
- Frequency: 50Hz
- Power not lower than: 1.3kVA
- Range of the timer: 0.4 s
- Film size: 127mm×178mm

- The movement of camera head mounting: vertical 630 mm
- Adapt to different part of human Rotation $\pm 180^\circ$
- The camera head mounting horizontal range: 160 mm
- Rotating angle: module of the camera, head mounting and the pole: 180°
- Specification of X-ray tube/focal spot value: XD7 – 1.05/35 1mm×1 mm
- Stationary anode: single focus



X-Ray Film Cassette With High Speed Screen

کست فلم اکسری

Features:

- Adopts special plastic connecting angles, anti-pounding
- It is contacted evenly with its specially made high-elasticity sponge pad
- Imaging stably and clearly
- The imaging layer is clear as well
- The sponge pad is specially treated
- It can protect the intensifying screen not to be damaged
- Adopts the entire plane grid chart testing technique to insure the Quality of products



X-Ray Grid

گرید اکسری

Features:

- This kind of x-ray grids support professional doctors to make accurate diagnosis improving the contrast of the image, absorbing scattered x-ray and maintaining an optimal transmission of primary radiation:
- Contrast: The antidiffusion x-ray grids are produced using products of high purity
- Ingredients: The x-ray grids use lead and aluminium of high quality which allow to obtain an image with such a high contrast, that you can see the difference with your naked eyes



Lead Coat Apron PA05

چین سربی ضد شعاع

Features:

- We Suggest all kinds of lead vest and lead apron and other X-ray protection products. They all have high quality and pass CE certificate. Measure Type (mm): 1000x600, 900x600 Lead shield: 0.25mmPb, 0.35mmPb, 0.50mmPb, 0.70mmPb



Darkroom Lamp

Features:

- Perfect for the small darkroom, or for safety spot lighting individual work areas. This compact safelight, can be installed wherever it's convenient - freestanding, mounted on the wall, or ceiling.



چراغ اطاق تاریک

Lead Glass

Features:

- Lead glass have high quality without any air bladder. It can make special measure according to customer request. Every 10mm thickness lead glass is 2mmPb.



شیشه های سربی ضد شعاع

Negatoscope Film

One & Two & Three Film

نگاتسکوب

Adopted with advanced clipping device.

Features:

- Films are easily to be inserted, taken out, and clipped firmly.
- The frame of body is made of the electrophoresis aluminum-alloy, it is durable. The screen is made of import white polymethyl methacrylate plate, which is bright and clean.
- Anti-ultraviolet ray, and never fade in color.
- It is the first one to make the viewer body with aluminum-alloy to shape wholly in domestic.
- It is beautiful design.
- The thickness is 8cm only, saving space.



Compact

Optional SpO2 and CO2

Biphasic waveform gives more effective defibrillation at lower energy

Features:

- Nihon Kohden's unique ActiBiphasic™ technology provides more efficient defibrillation than conventional biphasic circuits by maintaining constant second phase pulse width for high impedance patients
- AED with disposable pad adapter cable and disposable pads, automatic charging start for hands-free defibrillation, CPR timing sound, and optional voice prompt
- Noninvasive pacing (TEC-5531)
- Crisp, clear TFT color LCD screen displays 2 waveforms
- Fast charging — less than 3 seconds to 150J and less than 5 seconds to 270J
- Fast ECG recovery for immediate monitoring after defibrillation
- High reliability high voltage capacitor protects against defibrillation failure. Together with the battery and capacitor test, reliable defibrillation is always assured.
- QP-765VK Defibrillation Report Viewer software lets you review, edit and print defibrillation reports on a Windows® PC
- Voice and ECG recording on SD memory card
- External automated defibrillator GmbH



Features:

- Introduction
- The SH200 emergency and transport ventilator is designed to manage work of breathing, offer different modes of breath delivery, and help a practitioner select the most appropriate ventilator settings. The user interface is intended to be intuitive to anyone who knows how to operate a ventilator, and can be learned with minimal training. The user interface includes 5.6" TFT screens that display monitored data separately from ventilator settings for easy assessment of your patient's condition.
- Intended use
- The SH200 Ventilator is a high-capability ventilator intended for acute and subacute care of pediatrics, and adult patients. The user interface, breath delivery, and patient monitoring capabilities are designed for easy future enhancement. Mobile use for emergency medical care or primary care of emergency patients:
 - - During transport in emergency rescue vehicles or aircraft including helicopters,
 - - In accident and emergency departments, in the recovery room.



Features:

- It is a ventilation device for infant with novel structure and good performance, and chooses opening ventilation mode with high frequency and little tidal volume, so the airway pressure is low. If you want to know more.
- A. The tidal air can let out with constant pressure, constant current or accurately adjustable flow.
- B. Opening ventilation, opening intubation makes it not need casing bag, little resistance as expiration is suited for the ventilation management of infant.
- C. Evident effectiveness of treating ards can be shown with inserting small tube and jetting oxygen through nasal vestibule, which is secure and doesn't cause pressure wound easily.
- D. Peep and humidifier volume can be adjusted accurately.
- E. Alarm system with sound and light when no oxygen, poor of electric quantity or low airway positive pressure.
- F. Heated humidifier can be used for good effectiveness of humidifying.
- G. Accumulator jar, it can be used while being charged and can last for more than four hours.
- Specifications
- Frequency 10+150 breaths/min
- I/e ratio 1:1, 1:1.5+ 1:3 and inverse ratio
- Pressure atomizer rate ≥ 6 ml/h
- Process ventilation = 10 min,
- Pro I: f(150): f(35) = 7:3
- Pro II: f(35): f(150) = 7:3
- Storage battery 4ah, automatic charge when 12v
- Sigh: 3 breaths/min
- Alarm: alarm when battery voltage is lower than 11v, alarm lasts 6 seconds if no oxygen, alarm with audible signals and flashing light when the airway pressure is over 0.8 kpa
- C_{pa} 0+0.5 kpa
- P_{ee} 0+0.20 kpa
- Oxygen concentration adjustable: 21%-90%
- Jetting volume range 0+600 ml/time
- Ventilation mode: hfjv (high frequency jet ventilation); cpap (continuous positive airway pressure); hfjv+peep (positive end-expiratory pressure), hfjv+sigh (sigh), process ventilation i and process ventilation ii.



Features:

- 1. Intelligent battery management system will prolong the battery's life.
- 2. Consummate alarming function and easier use.
- 3. Adopts double MPU in work to ensure system security.
- 4. Pressure release function.
- 5. With KVO function.
- 6. After 6 hour full charge. It will work 10 hour in 10ml/h



Infusion pumps IPA112

انفیوژن پمپ

Features:

- Range of pre-set of infusion rate 1-1000ml/h(1ml/h step)
- Range of pre-set of infusion volume 1-9999ml
- Indication range of volume infused 1-9999ml
- Use of syringe Comply with all brands after calibration
- Infusion precise $\pm 5\%$
- Bubble sensitivity Detestability of air bubble $\geq 40\mu\text{L}$
- Occlusion alarm pressure $100\text{KPa} \pm 20\text{KPa}$
- Alarming Air Bubble, Occlusion, Door Open, Complete infusion, Low power, Motor failure, Drop abnormal, Low temperature, Pause overtime
- It is beautiful design.
- The thickness is 8cm only, saving space.



Model: LP-2000



Model: SA212

Features:

- KVO rate KVO rate as at 1ml/h with flow rate no higher than 10ml/h; As at 3 ml/h with flow rate higher than 10ml/h Internal battery Fully charged 6 hours, the internal DC12V Ni-MH battery can continuously run over 4 hours at average rate level. Power 100-240VAC 50/60Hz Power consumption 18VA

Features:

- An oxygen concentrator is a mechanical-electrical device which works to collect and convert oxygen from room air. The machines also absorb nitrogen from ordinary ambient room air to provide a continuous flow of oxygen enriched air to the patient. Home oxygen concentrators offered by Rehabmart are stationary, compact and lightweight enough to be easily rolled from room to room. Smaller handheld units can be carried around by the user. We offer several portable battery powered units such as the Portable oxygen concentrator JAY-1. Oxygen concentrators are often recommended in healthcare applications when pressurized or liquid oxygen is too dangerous or not cost efficient. Concentrators cost less and make economical sense for a variety of reasons. The primary benefit is that the O2 concentrator does not constantly require oxygen tank refills.



Features:

- Seamless Steel Gas Cylinder(With Valve and Cap)Valve
- Type: QF-2A/2P/2C or according to customer requirement.
- Water Capacity: 40-42L
- Oxygen Capacity 6000L
- Working Pressure: 150 Bar
- Testing Pressure: 250 Bar
- Outside Diameter: 219mm
- Height(With Cap and Valve): 1490mm
- Wall Thickness: min 5.7mm Weight: 55Kgs
- Cylinder Color: Blue or according to customer requirement
- standards (GB, BS,CGA,DIN,and JIS etc.)



15L



10L



4L



Features:

- 4-Wheel Gas Cylinder Hand Truck is versatile and easily converts to a safety stand. The rear wheel carriage features extended back wheels that lock into place for max. stability. Optional workbench extra.
- MEGA truck Designed to carry E & D Sized Gas cylinder Bottles
- Compact hand truck to suit 'E' & D sizes oxygen cylinder
- Fitted with "chain restraints" to secure bottle to trolley
- Powder coat in beige finish as standard, other colors on request.
- Fitted with 160mm Dia. rubber wheels as standard Stair climber wheels also available (priced on



Features:

- input pressure:15Mpa
- output pressure:0.2-0.3Mpa
- automatic discharge pressure of the safety valve:0.35+_0.05Mpa
- the range of flow: 1-10L/min,1-15L/min
- outlet thread G 5/8
- To ensure safety, reliability, and durability, this regulator is manufactured from brass and medical grade plastic.
- To ensure safe operation, each regulator is equipped with an internal safety relief valve.
- All oxygen regulators include an impact resistant gauge and gauge cover.
- Our oxygen regulators are available with different standard(GB,CGA,BS,DIN,JSI etc.) and different spec connections(G5/8,CGA870,CGA540 connections, etc.)



Medical Oxygen Manometer

مانومتر اکسیجن طبي

Features:

- Gas: O₂
- Inlet Pressure: 15MPa
- Measuring range: 0-2MPa
- Inlet Tread: G5/8 left
- Outlet thread: M16*1.5-left
- Pressure: Inlet: 0-25MPa, Outlet: 0-4MPa
- Excellent materials, unique appearance, the gasket is NBR without deformation and rot experimented in CNG. It also has a function of anti-explosion and anti-reveal.
- Application:
- Petroleum, natural gas, pipeline, welding, cutting, medicine, food, health and electronics



Features:

- High Power and High Brightness2. Light Spot is clear and is adjustable3. It can be work with 90V-240V and AC/DC power supply4. Not fan inside. No Noise and No Vibration5. It Can Be Equipped with Binocular Loupes and CCD Video System
- ID-04 Exam Light * Light intensity: $\geq 12,000\text{Lx}$
- * Power: 30W;
- * Height adjusts range: 1000 ~ 1600mm



Features:

- various uses, more suitable for home use.
- This product is suitable for the surroundings, which need faint scent or disinfectant, or increasing humidity. It has a 350mL reservoir, more convenient for use.
- Facial cleaning & beauty care
- Applying over 1MHz ultrasonic nebulized mist to clean the face is very effective, and it is a usual skin care method, very convenient and comfortable.
- Jewelry cleaning: Immerse the jewelry in the detergent and then turn on the machine. The grease and dirt can be removed from the jewelry after 10 minutes.

Principal technical data:

Voltage: AC220V±10%

Ultrasonic frequency: 1.7MHz ± 10%

Continuous working time: ≥4h

Consumption power: ≤50W

Max medication capacity for small cup: 150mL

Max medication capacity for big cup: 350mL

Max nebulizing rate: ≥ 3mL/min



Air-Compressing Nebulizer 403A

نیبولايزر های معمولی

Features:

- It reduces Liquid medication to tiny particles by compressing air.
- The tiny particles can be inhaled by patients.
- Technical Specifications:
 - Method of nebulization: Piston pump compressing
 - Operating voltage : 220V-230V, 50Hz AC or 110-120V, 60Hz AC
 - Power consumption : 80 W
 - Compressor Pressure: 14 psi , 40psi
 - Free air flux compressing pump: ≥ 10 LPM

Package:

1pc/carton, Meas:27x13.5x19cm,
G/NW:1.87/1.7kgs

Accessories:

corrugated tube (1pc, 16cm),
mouthpiece(1pc), filter sponge
(2pcs), connecting tube (1pcs,
195cm), nebulizer cup(1pc, 6ml),
connectors (2pcs)



Features:

- Long functional life
- Sturdy design
- Can be operated without power
- Easy operations
- Principal technical data:
- Max negative pressure value: >0.08MPa
- Negative pressure back-reduction while being closed: <0.005MPa/10min
- Reservoir capacity:1000mL
- Pedal pressure:<245N
- Weight:<4.5kg



Portable Suction Machine AC & DC 7EA & 7ED

سکشن پورتبل برقی و باطری

Features:

- We are offering 7E-D AC/DC universal suction machine which adopts three modes to supply electricity: alternating current, direct current and batteries which make these universal suction machine ideal for lack of alternating current situation such as on vehicles and outdoor places to save and nurse patients. The features and specifications are as follows;

Adopting oil-free lubrication pump, square negative pressure dial and built-in bottle.

- Low noise
- Small size
- Easy to carry
- Power supply: AC 220V±10
- 50Hz±2 12VDC
- Power: 90VA
- Max negative pressure value: 0.075MPa
- Pumping rate: 15L/min
- Reservoir volume: 1000mL
- Noise: 65dB A



Features:

- Clean-without pollution of oil and smoke
- Convenient-no need add oil to maintain daily
- Safe-no plus pressure during use
- Adopts completely plastic panel design, which makes it more fancy and fashionable The device of intercepting oil for circumference can reduce the oil pollution
- Easy to carry, low noise, high negative pressure and large flux
- Nebulization rate: 0.20 ml/min
- Noise: ≤65 dB
- Continuous working time: 7,000 hours

Principle technical data:

Power Voltage: AC220V±22V 50Hz±1Hz
Max negative pressure: 0.09MPa
Noise: 65dB (A)
Power: 180VA
Pumping rate: 20L/min
Reservoir capacity: 2500mL/pc, 2pieces



Electric Suction Machine 7A-23D

سکشن برقی

Features:

- Clean-without pollution of oil and smoke
- Convent-no need add oil to maintain daily
- Safe-no plus pressure during using
- No flow backwards pressure when the machine stops, so the liquid won't flow backwards
- Select negative pressure at will with no level for pressure adjustment, and overflow protection mechanism, safe and reliable.

Package: 1pc/carton, Meas:27x13.5x19cm, G/
NW:1.87/1.7kgs
Accessories: corrugated tube (1pc, 16cm),
mouthpiece(1pc), filter sponge (2pcs), connecting tube
(1pcs, 195cm), nebulizer cup(1pc, 6ml), connectors (2pcs)



Features:

- In TH02-9 –reflector luminescence shadow less lamp adopts light sources from different positions for focus, providing illumination for surgical operations and medical examination and reducing shadows produced by different parts of medical workers. Illumination can be adjusted according to practical requirements. The lamp is fit for lighting for surgical operations and medical examination in hospitals

TH02- 9 reflector and TH02-5+12 Cold Light Operating Lamp

Technical Data:

Illuminance: $\geq 90000\text{Lux}$,
 Color temperature: $4000\pm 500\text{K}$
 power supply voltage: $\sim 220\text{V}/50\text{-}60\text{Hz}$
 110V/60Hz custom-made)
 Rated Voltage of Bulb: 24V
 Rated Power of Bulb: 25W
 Input power: 240VA
 Lowest height of installation: 2900mm
 Bulb :Cold light source

Technical Data:

Illuminance: $\geq 120000\text{Lux}$, $\geq 50000\text{Lux}$
 Color temperature: $4000\pm 500\text{K}$
 power supply voltage: $\sim 220\text{V}/50\text{-}60\text{Hz}$
 110V/60Hz custom-made)
 Rated Voltage of Bulb: 24V
 Rated Power of Bulb: 25W
 Input power (w): 450VA
 Lowest height of installation: 2900mm
 Bulb: cold light source
 Input power: 240VA
 Lowest height of installation: 2900mm
 Bulb :Cold light source



Features:

- TH-05E(emergency Type) and TH-05(Trolley mounted) at your optional.Bulb :Tungsten halogen bulb
- TH-04E(emergency Type) and TH-04(Trolley mounted) at your optional.
- Bulb :Tungsten halogen bulb



The function of the bed is wide. It is not only can be used for head\neck \ chest \bodily limb &other surgical operations but also be fit for the operations of kidney or gall-bladder.

Features:

- Length & width for bed top: 1930 mm × 500 mm
- Min .&Max. height for bed top: 790 mm~1010 mm,
- Degree for bed top leftward &rightward tilting
- Leftward $\leq 15^\circ$ rightward $\leq 15^\circ$
- Degree for bed top forward &backward tilting
- Forward $\leq 20^\circ$ backward $\leq 15^\circ$
- Degree for headrest adjustment
- Upward $\leq 10^\circ$ downward $\leq 90^\circ$
- Degree for leg rest adjustment : downward $\leq 90^\circ$ Power :AC 220V50Hz



Features:

- This table is suitable for surgical procedures of the head, neck, thorax, abdomen, perineum and extremities as well as for gynecological, oto-rhino-laryngological and orthopedics operation. It can be raised or lowered hydraulically by means of an oil pump. Various positions can be controlled from both side.



Features:

- Max. And Min. Height For Tabletop: 1040mm x 800mm
- Max Angle Of Tabletop Tilting:
 - Forward, lesser or equal to 25 degrees
 - Backward, lesser or equal to 25 degrees
- Max Angle For Left And Right Tilting:
 - Left, lesser or equal to 20 degrees
 - Right, lesser or equal to 20 degrees
- Max Degree For Back Rest Adjustment:
 - Up, lesser or equal to 80 degrees
 - Down, lesser or equal to 10 degrees
- Length And Width Of Tabletop: 2100mm x 480mm



The desk pedestal and external oil pump of this unit are made of stainless steel. Be furnished with mattress and uses hydraulic pressure for lifting function.

Features:

- Max. And Min. Height For Tabletop: 1040mm x 800mm
- Max Angle Of Tabletop Tilting:
 - Forward, lesser or equal to 25 degrees
 - Backward, lesser or equal to 25 degrees
- Max Angle For Left And Right Tilting:
 - Left, lesser or equal to 20 degrees
 - Right, lesser or equal to 20 degrees
- Max Degree For Back Rest Adjustment:
 - Up, lesser or equal to 80 degrees
 - Down, lesser or equal to 10 degrees
- Length And Width Of Tabletop: 2100mm x 480mm
- Max. Waist Rest Adjustment: 120mm
- Leg Rest Adjustment: lesser or equal to 90 degrees
- Oil Pump Adjustment: 240mm



Features:

- Disposable nylon perforated cap
- Disposable bouffant cap
- Disposable snood japan cap
- Disposable doctor cap
- Disposable surgeon cap
- Disposable space cap
- Disposable beard cover
- Disposable surgical gown
- Disposable isolation gown
- Disposable coverall with hood
- Disposable tyvek coverall
- Disposable coverall with collar
- Disposable apron 14. Disposable astronaut cover
- Disposable pp shoe cover
- Pp+pe shoe cover
- Disposable non-slippery shoe cover
- Disposable pe shoe cover
- Disposable cpe shoe cover
- Disposable sms shoe cover
- Disposable pvc shoe cover
- Disposable sms sleeve
- Disposable pe sleeve
- Non-woven surgeon face mask with tie
- Paper face mask
- Active carbon mask
- Disposable dust mask



Features:

- Trade Info Standard: ISO9001,TUV13485
- Production Capacity: 6,000pcs/year
- Model NO.: GD 300
- Basic Info. Model NO.: GD 300
- Additional Info. Standard: ISO9001,TUV13485
- Production Capacity: 6,000pcs/year
- Company:Gauteng Science & Technology Development Co., Ltd
- Product Description :
 - 300W high-power output continuous adjustable, satisfied varied surgery.
 - Include: Ordinary surgery, cardiology, urology, gynecology, chest chirurgery, oncology.
 - Control with the closed loop micro kit, double frequency output, wide range and constant power.
 - L electrode board use NESSY safety system.
 - Like drawing, no press, little ravage, smooth incision, shorten the operation time, improving the efficiency.
 - Seven working modes.



Standard Surgical Sets

سیت های استاندارد سامان آلات جراحی

Features:

- Laparotomy Set (Major basic Surgery set)
- Gynecology Set
- CS set
- Obstructed Labor Set
- Vaginal Hysterectomy set
- Tube Ligation set
- Episiotomy Set
- Tonsillectomy Set
- Hemorrhoidectomy Set
- Appendectomy Set
- Herniotomy And Hernioraphy Set
- Minor Surgery Set
- Suture Set
- Etc.



Features:

- RIPE-B (10.4 TFT display)
- This is the middle anesthesia machine Readeagle has developed and manufactured. High-temperature plastic coating makes the surface of the frame smooth and lustrous. This well prevents any dust from sticking to the frame. The anesthesia ventilator is furnished with a color 10.4TFT" screen that displays P-T, F-T wave forms .
- Main parts:
 - Main unit
 - Anesthesia ventilator
 - Eagle3000 vaporizers
 - Standard accessories



Technical :

- specifications Ventilation Mode: Standby, Volume, Pressure, SIMV, Manual Parameters monitored: Vt, MV, Paw (Ppeak, Pplat), FiO2, breath rate Waveforms displayer: P-T, F-T Alarm: Paw high/low limit, MV high/low limit, FiO2 high/low limit, A/C power failure

Features:

- HART B LCD display Anesthesia Machine
- HART B anesthesia machine is one of main models. HART B is fully up to the CE standards
- for medical equipment. The anesthesia ventilator has four ventilation types (Stand by, Volume, SIMV and Manual) . The parameters monitored include Vt, breath rate, MV, Paw , and the waveforms include P-T and V-T.
- Main parts
 - Main unit
 - Anesthesia ventilator
 - Eagle2000 vaporizers
 - Standard accessories



Technical :

- specifications Ventilation Mode: Standby, Volume, Pressure, SIMV, Manual Parameters monitored: Vt, MV, Paw (Ppeak, Pplat), FiO2, breath rate Waveforms displayer: P-T, F-T Alarm: Paw high/low limit, MV high/low limit, FiO2 high/low limit, A/C power failure

Features:

- LIPU-I Anaesthetic Machine
- This machine is fully up to the CE standards for medical equipment. Two ventilation modes for the anesthesia ventilator is volume and manual. The data displayed include Vt, MV and breath rate. High-precision flowmeters fully meet the requirements of anesthesia machine running in a close mode
- Main parts:
 - Main unit
 - Anesthesia ventilator
 - Eagle1000 vaporizers
 - Standard accessories
- Technical specifications:
 - Ventilation mode: IPPV, Manual
 - Parameters monitored: Vt, Paw, mv, breath rate
 - Alarm: Vt high/low limit, MV high/low limit, low gas supply



Hemodialysis Machine SWS-4000A

ماشین هیمودیالیز



Intelligent Operation

- 12.1 inch LCD+touch screen, multi-language operation interface.
- Adjust the level of venous bubble catcher automatically to prevent blood pollution and reduce dialysis risk.
- Convenient process for sequential dialysis (Dialysis ↔ IUF) and high-low sodium sequential dialysis.



Safe & Effective Treatment

- The hydraulic, blood circuit and monitor system can be mandatory self-test, so that ensure the safety treatment.
- Ultrasonic and optical detector on venous ensures the safety of blood return.
- Dialysate configuration feedback control system to ensure accurate dialysate concentration.
- Advanced capacity balance feedback control system, ensures UF-precision.



Visual Intelligent System

- Preset automatic switch time and disinfection mode, and record all disinfection.
- Dynamic tracking and monitoring functions such as arterial pressure, venous pressure and transmembrane pressure can respond to abnormal situations on time and alarm.



Powerful Compatibility

- Can be operated with Various brands of filters.
- Compatible with various brands of dialysis powder, bloodline and other hemodialysis consumables.



Features:

- Skin temp. and manual control servo-controlled by micro-computer
- Oven temperature alarm
- Available adjustment of radiator and mattress tilting
- With one illumination light
- APGAR timer
- RS-232 connector
- Suction(option)
- Based on FXQ-3, added with two phototherapy lamps
- Temperature range: 25~37
- Skin sensor accuracy: ± 0.3
- Bed temperature uniformity: ≤ 2
- Temperature increase time: ≤ 30 min
- Heater head adjustment: $0^{\circ}\sim 90$



Infant Warmer FXQ-3A

وارمر نوزاد

Features:

- Temp. range 25~37°C
- Skin sensor accuracy $\pm 0.3^{\circ}\text{C}$
- Bed temp. uniformity $\leq 2^{\circ}\text{C}$
- Temp. increase time ≤ 30 min
- 1. Skin temp. And manual control servo-controlled by micro-computer.
- 2. Oven temp. Alarm.
- 3. Available adjustment of radiator and mattress tilting
- 4. With one illumination light, two phototherapy lamps.
- 5. APGAR connector
- 6. Suction(option)
- 1. Temp. Range: 25~37° C
- 2. Skin sensor accuracy: $\pm 3^{\circ}\text{C}$
- 3. Bed temp. Uniformity: $\leq 2^{\circ}\text{C}$
- 4. Temp. Increase time: ≤ 30 min
- 5. Heater head adjustment: $0\sim 90^{\circ}$





Features:

- Rotatable Ceramic Spittoon
- Imported Electromagnetism
- Auto Spittoon Flush and Cup Filler Control System
- Leather Cushion
- Motor Dental Chair Control System up to Nine memory (inter-lock-system)
- 24V Noiseless DC Motor
- Operating Light
- LED Panoramic Viewer
- Saliva Ejector with High and Low Suction
- Instrument Tray with Air Brake (LCD SCD Screen)
- 3 way Syringe Cold/Hot Water
- Full Functional Foot Controller
- Water Tank (Air Pressurized)
- Operating Stool

Options:

- Imported 4 Hole High Speed Air Turbine hand piece
- Scaler
- LED Curing Light
- Endoscope System



AY-215B2





AY-215B5

Dental Camera (With 15 Inch Manitor)

Features:

- Type: Wifi or without Wifi (Choice)
- Voltage: AC100V~240V,50/60Hz
- 500 Million Pixels,1/4
- USB 2.0,VGA output can connection of the monitor or computer directly.
- U-Disk Reserve Picture.
- Itwith infrared remote control.
- With a dental case management software.
- 8G U-Disk Reserve

كامره دندان همراه مانیتور ۱۵ اینچ



Hand Piece

Features:

- Unique electric generator built in to power its LED illumination without needing fiber optic tubing.
- Optic fiber illumination 18,000 lux ensures brightness at preparation area. The function will not decline even with repeated sterilization.
- Durable ceramic bearing inside.
- Light weight, high strength alloy, powerful high torque turbine.
- Very high clamping force >40N
- Excellent cutting efficiency: 1mm/s

انواع هند پیس ها



Features:

- Eliminating air by pre-vacuum before sterilizing, which ensure better sterilizing effect and protect the thing. 2.Dry fast afterward vacuum plus heating. 3.Several built-in adjustable programmers -just choose a key according to what you are dealing with, and her do the rest. 4.Fully considered the users' convenience :Big press-keys, indicated by English and big signs. 5.Diagram illustrates what she is doing, nice and clear. 6.Fully computer controlled, digital meters.(patents pending) ,
- Chamber volume:20l
- .Chamber size:250*400mm
- Overall size:680*430*445mm
- Power:220v, 50hz
- Wattage:1800w
- Over weight:25kg



Air Compressor

Oil-Free & Noiseless

Features:

- Type: Piston
- Configuration: Portable
- Power Source: AC Power
- Lubrication Style: Oil-free
- Mute: Yes
- Input power: 0.55KW / 0.75HP
- Working pressure: 8 bar / 116 psi
- air flow rate: 100L/min
- speed: 1400/1700rpm
- thermal protector: 135±5
- move model: portable
- Voltage: according to your requirements

ماشین هوای یونت های دندان



Dental Ultrasonic Scaler B5

اسکر دندان

Features:

• Assembled with excellent piezo-ceramic, the hand piece has high and long lasting power and generates little heat. Digitally controlled, automatic frequency tracking ensures that the machine always works on the best frequency and more steadily. The scaling tip is made of titanium alloy material. The atomized spraying design forms the cavitation to achieve the cleaning and sterilization purposes. Ergonomic hand piece design adopts innovative structural patent, easy for long time use. The shell of the hand piece is made of the imported medical plastic, ensuring the safety of patients. The cable of the hand piece is made of imported silica gel tube, soft and durable. Axis of the hand piece is made of high-quality titanium alloy, strong and durable. The unique design of amplitude offers more convenience for operation. Beautiful appearance, exquisite craft, small and light, easy operation. Unique automatic amplitude compensation function maximally reduces patients discomfort



Features:

- Product model YX-280D(computer)Valid
- Working pressure:0.14Mpa
- Working temperature:126oC
- Maximum working pressure:0.165Mpa
- Adjustment of temperature:105-126oC
- Timer:0-99 min
- Heat average :%oC
- Power:1.5kw/AC220V,50Hz
- Auto power cut off of overheating protection for water-off & current overload
- Sterilizing plate: 27x26.5mm
- N/G.W:12/14kg



Technical :

- specificationsVentilation Mode: Standby, Volume, Pressure, SIMV, ManualParameters monitored: Vt, MV, Paw (Ppeak, Pplat), FiO2, breath rateWaveforms displayer: P-T, F-TAlarm: Paw high/low limit, MV high/low limit, FiO2 high/low limit, A/C power failure



Incinerator

محو کننده زباله جات طبی

Features:

• YF Series medical incinerator is a new type useful waste disposal equipment researched and developed successfully by our company basing on the full analysis of characteristics of the same kind of product domestic and abroad. This product not only can be used widely in every class hospitals for incinerating solid flammable waste such as surgical waster and substance with virus and etc, but also can be used in the farm, epidemic prevention department, industrial flammable waster residue, airport, railway, hotel, park, tourist attraction, and city for life waste incineration disposal



Hospital Washing Machine

ماشین های کالاشوئی شفاخانه ای

Features:

- Rated capacity(kg): 100kg
- Drum capacity(L): 1000L
- Motor power(kw): 7.5KW
- Washing rotate(rpm): 30
- Dewatering rotate(rpm): 650
- Steam pressure (Mpa): 0.4-0.5
- Overall dimensions(mm): 1600*10*2000
- Weight(kg): 3200



Mercury Sphygmomanometer Standing Type

Features:

- High precision mercury apparatus in dye cast aluminum case.
- Glass tube of excellent precision
- Easy to read anodized graduation plate up to 300mmHg.
- All metal parts chrome-plated with mercur locking device
- Complete adult velcro cotton cuff with D-ring
- 5-wheel with brake. Metal tube , adjustable height(with range of 108-150CM)



آه فشار خون سیمایی پایه دار

Mercury Sphygmomanometer

Features:

- High precision mercury apparatus in dye cast aluminum case.
- Glass tube of excellent precision
- Measure scope: 0-300mmHg
- Accuracy: ± 3 mmHg
- Sub-division: 2mmHg
- All metal parts chrome-plated with mercur locking device
- Complete adult velcro cotton cuff with D-ring
- Anchorage wall support with large basket for The cuff fastening.
- Color available: blue, grey, green, red, yellow, black

آه فشار خون سیمایی



Aneroid Sphagmomonometer (Jasmic)



Single and Dual head Stethoscope (Jasmic)



Features:

- Sphygmomanometer with attached stethoscope,
 - 300mmHg no-pin stop or pin stop manometer
 - 50mm diameter silver dial (65mmdiameter dial or 55mm diameter dial is available)
 - Chrome plated metal case(ABS plastic case is available)
 - Nylon cuff with D-ring(Cotton cuff with metal ring is available.)
 - Standard latex inflation system and air release valve with spring.
 - 2-tube adult size latex or PVC bulb and bladder
 - The attached stethoscope makes this unit a true "Self-Monitor"
 - Standard model in vinyl zipper case (Leatherette case is available)
- Digital liquid crystal date and time, alarm bell displayAutomatic memory storage, it can store 74 units of measuring figures maxPressing the storage key, it will show the average value of three lately testing.Manage by mmHg/kPa displaying.Turned off automatically two minutes late



Technical :

- Display mode: LCD digital displaying
- Range: Press 0~280mmHg(0~37.3kPa)
- Pulse 40~200/min
- Precision: Press ± 4 mmHg(± 0.5 kPa)
- Pulse within the readings $\pm 5\%$
- Automatic press-adding and decompressingFor arm of 22cm~32cmElectric source: 4 batteries of size 5, DC 6v/600mA

Digital Sphygmomanometer

آله فشار خون دیجیتل

Features:

- Wrist Blood Pressure Monitor , Arm Blood Pressure Monitor
- Digital liquid crystal,date and time alarm bell display
- Automatic memory storage, it can store 74 units of measuring figures max
- Pressing the storage key, it will show the average value of three lately testing.
- Turned off automatically two minutes late.
- Display mode: LCD digital displaying
- Press: 0~280mmHg(0~37.3kPa)
- Pulse: 40~200/min
- Press: ± 4 mmHg(± 0.5 kPa)
- Pulse :within the readings $\pm 5\%$



Features:

- This type of Baby weighing balance is specially made for measuring the weight of baby. The baby weight balance is advanced in structure and artistic in appearance, as well as its steady and reliable. It is the necessary measuring instrument both for modern family, hospital or any infant-care center, etc.
- Max weighing: 16kg
- Division: 10g
- Load platform area(LxW):545x270mm
- Measurement: 53.5x28.5x9.5cm
- Size of packing box:560x310x530mm 5SE5S/CTN
- Net weight:12.5kg
- Gross weight:15.5kg



Infant Scale (Digital)

ترازو دیجیتل اطفال

Features:

- Max.weighing:20kg
- Min .value per division:0.05kg(0-10kg)
- 0.1kg(10-20kg)
- Size of packing box:580x325x190mm
- Load platform area(LxW):545x270mm
- Measurement(LxWxH):545x330x153mm
- Net weight:3.5kg
- Gross weight:5kg



• Digital liquid crystal date and time, alarm bell displayAutomatic memory storage, it can store 74 units of measuring figures maxPressing the storage key, it will show the average value of three lately testing.Manage by mmHg/kPa displaying.Turned off automatically two minutes late

Features:

- 5kg x 20gms
- 10kg x 50gms
- 25kg x 100gms
- 50kg x 200gms
- (with a strong ABS Plastic shatter Proof case)100kg x 500gms
- (Aluminum casting body)



Height and Weight Scale

ترازو قد و وزن

Features:

- Dial Body Weight scale(basic type)Body- weight scale (Attached with Height Gauge) is widely applicable to measure weight and height of people in enterprise, school hospital, clinic and sports department, featuring advanced in design, high in accuracy and beautiful in shape. It won the title of good quality product in light industry of China and has enjoy high reputation both at home and abroad.

• Type	TH-HS02-120	TH-HS02-160
• Max weighting	120kg	160kg
• Min. value per division	0.5kg	0.5kg
• Height range to be measured	70-190cm	70-190cm
• Min. value of height per division	0.5cm	0.5cm
• Load platform area(LxW)	375x270mm	375x270mm
• Measurement (LxWxH)	695x286x930	695x286x930



Features:

- 2&5Channel stimulator with independent current intensity setting
- Current types: TENS, Faradic, IDC, FES currents
- Frequency modulation types: Burst, Amplitude Modulated, Frequency Modulated
- Timer time function: adjustable from 0 to 20 minutes
- Safety switch off
- Ease of use
- Treatment end alarms
- Output voltage: max 150 v
- Output current: max 80 mA
- Output frequency: 1-90 Hz
- Dimensions: 28.5 Cm x26 Cm x11Cm
- Weight: 2 Kg
- ISO 13485:2016
- 3year warranty



شرکت آسیافارما در سال ۱۳۸۱ فعالیت خود را آغاز نمود. در آن زمان مردم کشورمان نشتیاق و علاقه بسیاری برای پیشرفت و توسعه داشتند و نیاز شدیدی در جامعه به محصولات با کیفیت طبی احساس می کردند. بنا به همین دلایل، شرکت آسیافارما در آن دوره یعنی وقتی که دسترسی به خدمات و محصولات با کیفیت طبی بسیار کم بود، تاسیس گردید. شرکت ما همواره تعهد داشته است تا تجهیزات منبئی را بوجود آورد و محصولات و خدمات بهتری را به مردم ارائه نماید.

در ابتدا، شرکت آسیافارما کار خود را از یک شعبه تجاری در ولایت هرات شروع نمود. امروزه این شرکت از یک شعبه کوچک تجاری، به یک مجموع کلان از شعبات در سراسر افغانستان و در خارج از کشور تبدیل شده است. در حال حاضر، به صورت مجموعی شرکت آسیافارما بیش از ۴۰۰ نفر پرسونل دارد و تیم کاری آسیافارما، مفتخرانه در جهت ایجاد یک افغانستان صحتمند تلاش میورزند. امروزه آسیافارما در منطقه نیز شناخته شده است و خدمات و محصولات طبی خود را در خارج از کشور نیز عرضه می نماید.

یکی از بخش های مهم این شرکت، بخش لوازم و تجهیزات طبی و لابراتواری آسیافارما می باشد که در این بخش، ماشین آلات و تجهیزات با کیفیت طبی و لابراتواری از کمپنی های معتبر بین المللی از قبیل؛ Edan, Snibe, Riele, Jasmic, iband, Sonoscape, Siemens Healthineers و غیره به صورت انحصاری و قانونی وارد و در سراسر افغانستان عرضه می گردد.

همچنین خدمات پس از فروش به صورت دائمی برای مشتریان قابل دسترسی می باشد. تمامی انواع تجهیزات طبی الکترونیکی در شرکت آسیافارما توسط تکنیتران مسکلی و متخصص تعمیر می گردد. تکنیتران بخش خدمات در کشورهای جرمنی، چین، امارات و ... آموزش دیده اند و تمامی انواع ماشین آلات طبی و لابراتواری را به صورت کاملا تخصصی و با کارائی تعمیر می نمایند. خدمات پس از فروش برای تجهیزات طبی و لابراتواری در سراسر افغانستان در اختیار مشتریان می باشد.

ماموریت ما:

ماموریت ما ارائه خدمات و محصولات با کیفیت طبی به مشتریانمان و کمک به توسعه افغانستان از طریق ایجاد اشتغال و بالا بردن ظرفیت تولیدات با کیفیت داخلی می باشد.

دیدگاه ما:

دیدگاه آسیافارما اینست که مردم افغانستان بتوانند با بهره بردن از خدمات و محصولات با کیفیت، یک زندگی سالم را تجربه نمایند و در سطح ملی و بین المللی، صداقت، دانش و اعتماد در روابط ما و مشتریانمان وجود داشته باشد.



Asia Pharma

آسیا فارما

Experience a healthy life

تجهيزات طبي آسيا فارما



Asia Pharma
آسیا فارما
Experience a healthy life

📍 **Kabul:** Western Road of
Kabul University, Between
Dehbory Square and Last
Station of Kabul University
✉ equipment@asiapharma.af
☎ +93 799 14 10 98

📍 **Herat:** Shahre-e-Naw
Eidgah St., Asia Pharma
Medical Equipment
✉ sales@asiapharma.af
☎ +93 729 19 43 60

📍 **Kandahar:** 2nd floor,
Ayubi Shafa Market, Shah
Zaman Khan Wat, Nowi Sarak
✉ kandahar@asiapharma.af
☎ +93 799 08 5000

📍 **Mazar-e-Sharif:** 3rd Floor,
Aria Market, Ghazanfar Cross
Road, Darwazeye Balkh
✉ m.admin@asiapharma.af
☎ +93 793 15 16 01